



Society for Research in Child Development



**2012 Themed Meeting:**  
*Transitions from Adolescence to Adulthood*

October 18 - October 20, 2012

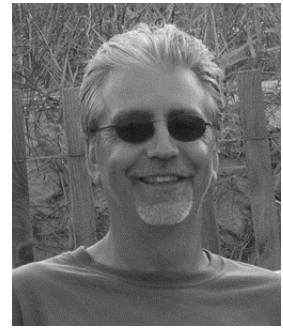
Tampa Marriott Waterside Hotel & Marina  
Tampa, Florida

## Table of Contents

Program Co-Chairs' Welcome .....	2
Meeting Information .....	3
Review Panels .....	4
Meeting Session Listing.....	5
<b>Thursday</b> .....	5
Invited Session .....	6
Poster Session with Refreshments .....	9
<b>Friday</b> .....	12
Invited Views by Two .....	13
Poster Session with Refreshments .....	17
<b>Saturday</b> .....	20
Invited Views by Two .....	20
Author Index.....	24
Meeting Level Floor Plan.....	34



## Program Co-Chairs' Welcome



Welcome to Tampa, Florida and to the 2012 Society for Research in Child Development Themed Meeting, *Transitions from Adolescence to Adulthood*. We have been planning this meeting for some time and are excited that it has finally arrived. Especially pleasing is how enthusiastic people have been about the meeting. With more than a little pride, we can share that this is the Themed Meeting that received the most submissions, suggesting that, like us, many SRCD members believe that the purview of child development research extends well into the third decade of life.

The purpose of this meeting is to provide an intimate forum for developmental scientists in an increasingly interdisciplinary and vibrant field of research to come together and discuss their work, share ideas, network, and form collaborations across disciplinary, methodological, and international boundaries. At the same time, we hope that the meeting will expose as many scholars as possible to the wonderful activities and programs that SRCD supports. Our goal is to build a bigger and more diverse community of early career and more senior scholars studying transitions from adolescence to adulthood, a topic that could not be more timely as a very large cohort of young people make their way to adulthood in a climate of great economic and social uncertainty and rapid technological advancement.

In this spirit, we have a top-notch program for you. Each morning will feature an invited session in Florida Salons I-IV. On Thursday from 10:50-12:30, Ron Dahl will discuss neuropsychology, decision-making, and behavior in a session chaired by Liz Susman. On Friday from 10:50-12:30, Linda Burton and Andrew Fuligni will offer sociological and psychological perspectives on diversity in the transition into adulthood in a session chaired by Vivian Gadsden. On Saturday from 9:00-10:40, Barbara Schneider will chair another interdisciplinary views by two sessions in which Rand Conger and Ingrid Schoon discuss how the transition into adulthood fits into the overall life course. Interspersed with these invited sessions will be 13 symposia proposed by attendees and 15 symposia constructed by us and the panel chairs from individual paper submissions. As if all of this were not enough, Thursday and Friday will conclude with sessions for 118 poster presentations. These poster sessions—held from 5:10-7:10 in the Florida Ballroom Foyer—will double as meeting-wide receptions...with appetizers and cash bar! And to get each morning off to a good start, there will be free coffee and light breakfast in the Foyer (8:30-9:00). Our hope is that there will be many shared experiences throughout this meeting, and we know that good beverages and food are often part of good shared experiences.

On a final note, we need to stress that this meeting has been a collaborative enterprise from the start. It is the result of the time and effort of many committed people in the SRCD office (Lonnie Sherrod, Susan Lennon, Amy Glaspie, and others) as well as members of the SRCD Interdisciplinary Committee who helped with the original proposal (Cynthia Hudley and Rashmita Mistry), the co-chairs of each of our five review panels (Bo Cleveland, Rachel Gordon, Cynthia Hudley, Andrea Hussong, Derek Kreager, Clea McNeely, Rashmita Mistry, Jeremy Staff, Elliot Tucker-Drob, and Adriana Umana-Taylor), and the dozens of scholars who reviewed proposals for us. Thank you all so much.

We hope that you have a great SRCD Themed Meeting. If you have any questions or suggestions, we will be wearing a Program Co-Chair ribbon on our badge. SRCD staff will also be available at the registration desk. Thanks for coming!

Rob Crosnoe and John Schulenberg  
2012 Program Co-Chairs

## *Transitions from Adolescence to Adulthood*

### 2012 Meeting Information

All events and sessions will be held in:

Tampa Marriott Waterside Hotel & Marina  
700 South Florida Avenue  
Tampa, FL 33602

**Always Wear Your BADGE - it identifies your registration and restricts you to the meeting for which you registered!**

Badges should be worn at all times, not only as a courtesy to other attendees, but also as an indication that you have registered before participating in any scheduled event. Badges must be worn to gain admission to the meeting sessions, poster session, and receptions for the *Transitions from Adolescence to Adulthood* meeting. **If you lose or forget your badge you may have it reprinted at the registration desk** (located near the Florida Ballroom Foyer on the 2<sup>nd</sup> floor of the hotel). Thank you for your cooperation!

#### Registration Desk

The registration desk is located near the Florida Ballroom foyer on the 2<sup>nd</sup> floor of the hotel.

Registration Desk hours:

Wednesday	4:00 PM - 7:00 PM
Thursday	8:00 AM - 5:30 PM
Friday	8:30 AM - 5:30 PM
Saturday	8:30 AM - 11:30 AM

#### Speaker-Ready Room

The speaker-ready room is located in Meeting Room 2 on the 2<sup>nd</sup> floor of the hotel. This room is equipped with a screen, LCD projector, a table, and chairs.

Speaker-Ready Room hours:

Thursday	8:00 AM - 5:00 PM
Friday	8:00 AM - 5:00 PM
Saturday	8:00 AM - 11:00 AM

#### Special Events:

*Coffee and a continental breakfast* will be available in the Florida Ballroom Foyer:

Thursday	8:30 AM - 9:00 AM
Friday	8:30 AM - 9:00 AM
Saturday	8:30 AM - 9:00 AM

***In conjunction with the Thursday and Friday night Poster Sessions there will be a Reception*** in the Florida Ballroom Foyer from 5:10 PM - 7:10 PM. All attendees are encouraged to come! **Please join us for wonderful hors d'oeuvres and drinks!**

**2012 Review Panels for**  
***Transitions from Adolescence to Adulthood***

A sincere thank you to all those involved in the review process! Your time and efforts are very much appreciated.

**Panel 1: Education and Work Panel**

*Chaired by:* Cynthia Hudley and Jeremy Staff

*Reviewers:* Teresa Fisher, Michelle Frisco, Vivian Gadsden, Adele Gottfried, Jessica Halliday Hardie, Kathy Nakagawa, Sonja Siennick, Matt VanEseltine, Mike Vuolo, Frank Worrell

**Panel 2: Family, Peer, Romantic, and other Social Relationships**

*Chaired by:* Derek Kreager and Adriana Umana-Taylor

*Reviewers:* Dana Haynie, Jeff Arnett, Margarita Azmitia, Scott Christopher, Michael Cleveland, Scott Gest, Linda Juang, Danielle Kuhl, Eva Lefkowitz, Marcela Raffaelli

**Panel 3: Biological, Neurological, and Physical Development**

*Chaired by:* H. Harrington Cleveland and Elliot Tucker-Drob

*Reviewers:* Brian D'Onofrio, Bruce Ellis, Chuck Geier, Carolyn Halpern, Paige Harden, Gordon Harold, Pete Hatemi, Kristen Jacobson, Jane Mendle, Jenae Neiderhiser, Ted Robles

**Panel 4: Mental Health and Problem Behavior**

*Chaired by:* Andrea Hussong and Clea McNeely

*Reviewers:* Anna Bardone-Cone, Christy Buchanan, Jerel Calzo, Adsegun Fatsui, Andrea Howard, Kristie Jackson, Kevin King, Krysia Mossakowski, Enrique Neblett, Belinda Needham, Sabrina Oesterle, Eleanor Seaton, Carolyn Spellings, Helene Raskin White

**Panel 5: Policy, Intervention, and Vulnerable Populations**

*Chaired by:* Rachel Gordon and Rashmita Mistry

*Reviewers:* Aprile Benner, Rebekah Levine, Mark Courtney, Matthew Diemer, Rachel Dunifon, Erin Godfrey, GiShawn Mance, Kelly Musick, Wayne Osgood

Thursday, 8:30 am - 9:00 am

(Event 1-01) Coffee

Florida Ballroom Foyer

Thursday, 8:30 am - 9:00 am

### 1-01. Coffee with Light Breakfast

Thursday, 9:00 am - 10:40 am

(Event 1-02) Constructed Paper Symposium

Meeting Room 7

Thursday, 9:00 am - 10:40 am

### 1-02. Health and Physical Development

Chair: *H. Harrington Cleveland*

- Positive Parenting Predicts Calibration of Cortisol Functioning Six Years Later in Emerging Adults  
*Martie Skinner, Elizabeth Shirtcliff, Kevin Haggerty*
- Loneliness, Day-to-day Stress and Objective Sleep Quality: Implications for Health Over the Transition to Adulthood  
*Leah Doane, Emily Thurston*
- Pathways to Adulthood and Adult Health  
*Shawn Bauldry, Michael Shanahan, Danielle Dean*

(Event 1-03) Constructed Paper Symposium

Meeting Room 1

Thursday, 9:00 am - 10:40 am

### 1-03. Social and Psychological Dimensions of Education

Chair: *Micere Keels*

- Understanding Adolescents' Support-Seeking Behaviors in School Contexts: The Contributions of Youth Participatory Action Research  
*Gretchen Brion-Meisels*
- A Sense of Belonging Among College Students with Disabilities  
*Meada Daly-Cano, Barbara Newman, Annemarie Vaccaro*
- "I got an Associate's Degree in High School": Academic Identity Development

Among Students From an Early College High School

*Laura Murray, Gina Arnone, Michael Nakkula*

- Understanding how Students Make Meaning of Risk Factors: Mediating Mechanisms for Academically Resilient Adolescents  
*Nikhil D'Sa*

(Event 1-04) Paper Symposium

Meeting Room 5-6

Thursday, 9:00 am - 10:40 am

### 1-04. Change in Alcohol Use and Well-being Across the Transition to Adulthood as a Function of Externalizing Symptoms and Social Roles

Chairs: *Jennifer L. Maggs, Jeremy Staff*

- Change in Alcohol Use and Well-being Across the Transition to Adulthood as a Function of Externalizing Symptoms and Social Roles  
*Jennifer Maggs, Jeremy Staff*
- Disentangling Levels and Rates of Externalizing Symptoms as Predictors of Alcohol Use Patterns in Emerging Adulthood  
*Andrea Hussong, Jim McGinley, Patrick Curran, Dan Bauer, Laurie Chassin, Robert Zucker*
- Alcohol Use and the Transition into Family Roles  
*Kaylin Greene, Jeremy Staff, Jennifer Maggs, Ingrid Schoon*
- Role Transitions and Statuses During Early Adulthood: National Panel Data on Their Prevalence and Effects on Health and Well-being  
*John Schulenberg, Jennifer Maggs, Jeremy Staff, Megan Patrick, Meghan Martz*

(Event 1-05) Paper Symposium

Meeting Room 4

Thursday, 9:00 am - 10:40 am

## 1-05. Social Mobility During the Transition to Adulthood: Potential and Limits of Individual Agency

*Chairs: Jutta Heckhausen, Ingrid Schoon*

- Social Mobility During the Transition to Adulthood: Potential and Limits of Individual Agency  
*Jutta Heckhausen, Ingrid Schoon*
- Applying the Motivation Theory of Life-Span Development to Social Mobility in the Transition to Adulthood  
*Jutta Heckhausen, Jacob Shane*
- Agentic Pathways toward Fulfillment in Work  
*Jeylan Mortimer, Mike Vuolo, Jeremy Staff*
- Social Mobility in a Distressed Economy: Matching Agency to Opportunity  
*Jacob Shane, Jutta Heckhausen*
- Intergenerational Transmission of Worklessness: The Role of Individual Agency as a Potential Protective Factor  
*Ingrid Schoon, Kathryn Duckworth, Matthew Barnes, Anna Vignoles*

Thursday, 10:50 am - 12:30 pm

### (Event 1-06) Invited Session

Florida Salons I-IV

Thursday, 10:50 am - 12:30 pm

## 1-06. Neuropsychology, Decision-Making, and Risky Behavior

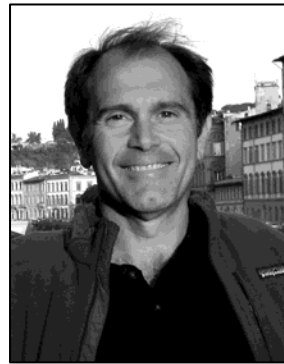
*Chair: Liz Susman*

*Speaker: Ron Dahl*

### Transdisciplinary Research on Adolescent Brain Development: Understanding Unique Opportunities for Prevention & Policy

**Abstract.** Adolescence is a period of increased rates of risk-taking, dangerous behaviors, and for developing a wide range of behavioral and emotional disorders. These problems contribute to significant mortality as well as a great deal of morbidity that begins in adolescence but often extends throughout the lifespan. Thus, there is a compelling need for a deeper understanding as to how and why adolescence creates these vulnerabilities. This presentation focuses on

transdisciplinary approaches to understanding how these vulnerabilities emerge at the interface of biological, behavioral, and social changes during this period of maturation-and how these approaches can provide unique insights regarding opportunities for early intervention and prevention. The first part of this presentation will present empirical data from controlled studies that support key aspects of our heuristic model, focusing on puberty-specific changes in sleep, emotion, and motivation. This second aspect of the presentation will discuss how this model may inform new transdisciplinary approaches to research focusing on the transition from adolescence to adulthood, including the broader implications and need for this research to advance understanding of the unique opportunities for early intervention, prevention, and health policy.



**Biography.** Ronald Dahl is Professor of Public Health and the Director of the Institute of Human Development at UC Berkeley. He is a pediatrician with long-standing research interests in the development of regulatory systems (e.g. sleep/arousal and

affect regulation) and their relevance to the development of behavioral and emotional health in children and adolescents. His current work focuses on transdisciplinary approaches to understanding adolescent brain development as a developmental period with unique opportunities for early intervention and prevention in relation to a wide range of behavioral and emotional health problems. He serves as editor for the journal, *Developmental Cognitive Neuroscience*. He has published extensively on adolescent brain development, sleep disorders, and behavioral/emotional health in children, and his work, increasingly, is focusing on the policy implications of this work.

Thursday, 1:30 pm - 3:10 pm

### (Event 1-07) Constructed Paper Symposium Meeting Room 7

Thursday, 1:30 pm - 3:10 pm

## 1-07. Alcohol and Aggression in Early Adulthood

*Chair: Katherine M. Klipfel*

- A Dyadic, Multimethod Investigation of Externalizing Behaviors & Psychological Aggression  
*Katherine Klipfel, Manfred van Dulmen*
- Mothers' Heavy Alcohol Use Moderates Effect of Positive Parenting on Emerging Adults' Alcohol Use: Does Living At Home Matter?  
*Michael Cleveland, Frederick Gibbons, Meg Gerrard, Kimberly Mallett, Rob Turrisi, Aimee Read, Carly Comer, Sarah Favero*
- Identifying the Pathways from Early Adolescent Aggression to Partner Violence in Adulthood: A Cumulative Continuity Perspective  
*Barbara Oudekerk, Joseph Allen, Amanda Hare, Joanna Chango, Erin Miga*
- The Effects of Marriage and Divorce on Alcohol Use in Young Adulthood: A Longitudinal Sibling-Comparison Study  
*Natalie Kretsch, Kathryn Harden*

---

**(Event 1-08) Constructed Paper Symposium**

Meeting Room 4

Thursday, 1:30 pm - 3:10 pm

**1-08. Distal Effects of Early Intervention**

*Chair: Rachel Gordon*

- Creating Developmentally Appropriate Interventions for Youth Transitioning from the Child Welfare System  
*Michael Pergamit, Erin McDonald, Marla McDaniel, Mark Courtney, Matt Stagner, Maria Woolverton, Akilah Swinton, Andrew Zinn*
- Effect of a Preventive Parenting Intervention for Divorced Families on the Intergenerational Transmission of Parenting Attitudes in Young Adulthood  
*Nicole Mahrer, Emily Winslow, Jenn-Yun Tein, Sharlene Wolchik, Irwin Sandler*
- The Effects of Early Childhood Intervention on Maternal Education: Implications for Teenage Mothers  
*Chelsea Burfeind, Frances Campbell, Elizabeth Pungello*

**(Event 1-09) Paper Symposium**

Meeting Room 1

Thursday, 1:30 pm - 3:10 pm

**1-09. Experiments that Improve Access to Higher Education**

*Chair: Barbara Schneider*

- Experiments that Improve Access to Higher Education  
*Barbara Schneider*
- The College Ambition Program: Improving Opportunities for High School Students Transitioning to College  
*Barbara Schneider, Christopher Khawand, Justina Judy*
- College Advisement in High School: Evidence from a Randomized Experiment  
*Brent Evans, Eric Bettinger, Anthony Antonio, Eileen Horng*
- The Forgotten Summer: Does the Offer of Summer Counseling Mitigate Attrition Among College-Intending High-School Graduates?  
*Benjamin Castleman, Lindsay Page, Korynn Schooley*

---

**(Event 1-10) Paper Symposium**

Meeting Room 5-6

Thursday, 1:30 pm - 3:10 pm

**1-10. Successes and Challenges of Minority Student Achievement at Predominantly Non-Minority Post-secondary Institutions**

*Chair: Vivian Gadsden*

*Discussant: Lara Perez-Felkner*

- Successes and Challenges of Minority Student Achievement at Predominantly Non-Minority Post-secondary Institutions  
*Vivian Gadsden, Lara Perez-Felkner*
- Minority Status and Access to Post Secondary Schooling in Lao Peoples Democratic Republic  
*Leena Her*
- Getting Them Enrolled is Only Half the Battle: Degree Attainment at the Intersection of Race/Ethnicity, Gender, and Class



*Micere Keels*

- Latino Students Succeeding in College and Beyond Against the Odds: An Intervention Aimed at College Completion and Research on How They "Make It" to Grad School  
*Diana Romero, David Nocenti*

Thursday, 3:00 pm - 3:30 pm

(Event 1-11) Afternoon Break  
Florida Ballroom Foyer  
Thursday, 3:00 pm - 3:30 pm

### 1-11. Afternoon Coffee Break

Thursday, 3:20 pm - 5:00 pm

(Event 1-12) Constructed Paper Symposium  
Meeting Room 4  
Thursday, 3:20 pm - 5:00 pm

### 1-12. Dating and Romance: Developmental and Psychological Mechanisms

*Chair: Manfred H. van Dulmen*

- The Deterioration of Romantic Relationships: Descriptions and Implications for Breaking Up  
*Michael Langlais, Edward Anderson, Catherine Surra*
- A Multi-Method Investigation of Self-Control and Psychological Aggression in Dating Couples  
*Manfred van Dulmen, Katherine Klipfel, Nathan Bruss, Shelley Listwan*
- Parent-Child Relationships in Childhood and Adolescence: Implications for Love and Work in Young Adulthood  
*Anna Solmeyer, Ji-Yeon Kim, Chun Bun Lam, Susan McHale*
- The Role of Identity as a Mediator in the Relation between Social Withdrawal Subtypes and Emerging Adults' Romantic Relationship Characteristics  
*Jennifer Christofferson, Carolyn Barry, Larry Nelson, Rachel Grover*

---

(Event 1-13) Constructed Paper Symposium  
Meeting Room 7  
Thursday, 3:20 pm - 5:00 pm

### 1-13. Studying Lives Dynamically

*Chair: Andrea Hussong*

- Viewing the Multidimensional Nature of the Life Course with a Multiple Event Process Survival Mixture Model  
*Danielle Dean, Daniel Bauer, Michael Shanahan*
- Validating the Use of Event History Calendar Methodology among Populations Affected by Political Conflict: Palestinian Youth's Transition to Adulthood  
*Carolyn Spellings, Clea McNeely, Brian Barber, Robert Belli, Olfat Hammad, Waleed Ladadweh, Khalil Shikaki*
- Adolescent depressive symptom trajectories and Young Adult physical illness: A Growth Mixture Model Analysis  
*Tae Kyoung Lee, Kandauda As Wickrama*

---

### (Event 1-14) Paper Symposium

Meeting Room 5-6  
Thursday, 3:20 pm - 5:00 pm

### 1-14. Personality Change from Adolescence to Adulthood: Negative Emotionality, Constraint, and the Causal Impact of Common Life Events

*Chair: C. E. Durbin*

- Personality Change from Adolescence to Adulthood: Negative Emotionality, Constraint, and the Causal Impact of Common Life Events  
*C. Durbin*
- Developmental Press: Modeling the Role of Life Events in Personality Trait Change from Adolescence to Adulthood  
*C. Durbin*
- Acting Like an Adult Doesn't Make You One: Pubertal Onset and Initiation of Sexual Intercourse  
*Brian Hicks*
- Reciprocal Effects of Personality and Alcohol Use Trajectories from Early-Adolescence to Young Adulthood  
*Daniel Blonigen*

- The Transition into Adulthood: Moving Out, Moving In, Marriage, and Parenting  
*Wendy Johnson*

---

**(Event 1-15) Paper Symposium**

Meeting Room 1

Thursday, 3:20 pm - 5:00 pm

**1-15. Predictors and Consequences of College Attendance and Drop-Out**

*Chair: Megan Patrick*

*Discussant: John Schulenberg*

- Patterns of 2-year and 4-year College Attendance and Non-attendance in Monitoring the Future  
*Megan Patrick, John Schulenberg*
- Drinking Among College Dropouts and Persisters in the U.S.  
*Rob Crosnoe, Sarah Kendig, Aprile Benner*
- The Economic Consequences of College Dropout  
*Jeremy Staff, Jeylan Mortimer, Rebekah Young*
- Predictors and Consequences of College Attendance and Drop-Out  
*Megan Patrick, John Schulenberg*

**Thursday, 5:10 pm - 7:10 pm**

**(Event 1-16) Thursday Poster Session with Concurrent Reception**

Florida Salons V-VI and Florida Ballroom Foyer

Thursday, 5:10 pm - 7:10 pm

- |   |  |    |  |
|---|--|----|--|
| 1 | Understanding Psychology-Specific Epistemological Beliefs in Emerging Adults<br><i>Maggie Renken, Ethan McMahan, Martina Nitkova</i>   | 11 | Racial and Ethnic Microaggression, Ethnic Identity, and Risk and Protective Factors for Well-Being in Young Adulthood<br><i>Shandra Forrest-Bank, Jeffrey Jenson</i> |
| 2 | Natural Mentoring in Retrospect<br><i>Mary Hamilton, Stephen Hamilton</i>  | 12 | The Effects of Resilience on Educational Pathways for High Risk Youth<br><i>Stephen Peck, Oksana Malanchuk, Robert Roeser, Jacquelynne Eccles</i>                    |
| 3 | Postsecondary Transition Experiences of Young Adults with Developmental Disabilities and their Families<br><i>Miriam Tillinger, Ashley Woodman, Miriam Heyman, Amanda Cannarella, Penny Hauser-Cram, Molly McMullan, Megan Cannavina</i> | 13 | Study Abroad as a Rite of Passage<br><i>Tabitha Holmes</i>   |

4 From a Detour Back on Track - The Vocational Training for Disadvantaged Young Adults  
*Monique Landberg, Peter Noack*

5 Trajectories of Mexican American Youths' Academic Aspirations and Expectations: The Role of Socioeconomic and Immigrant Background  
*Norma Perez-Brena, Kimberly Updegraff, Adriana Umaña-Taylor, Susan McHale, Sue Annie Rodriguez, Melissa Delgado*

6 Adolescent Sexual Harassment and Coping Experiences at Work  
*Patricia Jarvis, Kimberly Schneider, Mackenzi Harmon*

7 Cognitive Control and Academic Indicators of Success Among Young College Mothers  
*Paul Andersen, Miriam Ehrensaft, Di Nguyen*

8 Disconnected Youth With Autism  
*Paul Shattuck*

9 Middle-School Students Negotiate a Workplace Simulation with Threats to Authority and Supportive Friends  
*Philip Kreniske*

10 Explaining Educational Attainment Among Children of Mexican, Cuban, Filipino, and Chinese Immigrants: What Matters Most?  
*Sarah Feeney, Monica Johnson*

- 14 Developing Personal Growth Initiative for the Transition from College to Work: An Intervention Study  
*Timothy Reilly*
- 15 Longitudinal study of the effects of parental practices on self-esteem and psychological distress among 14 to 18 year olds  
*Jacinthe Dion, Anne-Marie Boudreault-Bouchard, Jennifer Gervais, Alexandra Boucher, Michel Perron*
- 16 Using the Emerging Adulthood Concept to Understand Childhood Cancer Survivors  
*Jaehee Yi, Tian Tian*
- 17 Bonding Capital in Adolescence as a Predictor of Bridging Social Capital in Early Adulthood  
*Jennifer Doty, Jodi Dworkin*
- 18 College Students and their Parents: Communication Patterns, Support, and Perception of Family Environment  
*Karin Bartoszuk, Logan Vess, Samantha Jones*
- 19 The Role of Facebook in Developing Social Relationships During the Transition to Adulthood.  
*Katherine Grein, Renée Dennison*
- 20 Jealousy in Close Relationships Among Emerging Adults  
*Katrina Blomquist, Martha Putallaz*
- 21 The Complexity of Co-Parenting with Romantic Partners in Female-Headed Families: Effects on Children in the Transition to Adulthood  
*Lakshmi Jayaram, Angela Estacion, Pamela Bennett, Amy Lutz*
- 22 A Preliminary Examination of Parental Influences on Drinking Among Latinos During the Transition to College  
*Lindsey Varvil-Weld, Kimberly Mallett, Rob Turrisi, Michelle Hospital*
- 24 Attachment Relationships as a Predictive Variable for Adjustment Outcomes of Middle School Students  
*Miao Li, Keisha Love*
- 25 Feeling Adrift Versus Anchored: An Initial Exploration of Identity "Fusion" Among Emerging Adults  
*Michael Buhrmester, William Swann, Jr.*
- 26 Differential Impact of Maternal and Paternal Attachment on Early Adolescent Romantic Involvement  
*Michelle Abraham, Amber Kuehn*
- 27 Perceptions about adulthood in Lithuanian emerging adults  
*Rimantas Vosylis, Saule Raiziene, Rita Zukauskiene*
- 28 Sexual Relationships at the Transition to College  
*Rose Wesche, Nancy Darling*
- 29 Relational influences on Attachment Anxiety and Avoidance among Newly Emancipated Foster Youth  
*Sabrina Peterson, Cameron Papp, Tuppett Yates*
- 30 Are the non-marital romantic relationships of emerging adults associated with mental health?  
*Sarah Whitton, Eliza Weitbrecht, Amanda Kuryluk*
- 31 Links Between Sibling Experiences and Romantic Competence From Adolescence Through Young Adulthood  
*Susan Doughty, Chun Bun Lam, Susan McHale*
- 32 The Role of Family Routines and Rituals During Adolescence and the Implications for Healthy Adjustment in Emerging Adulthood  
*Yesel Yoon*
- 34 Inter-rater agreement of an infant motor assessment between parents and a pediatrician specializing in child development  
*Ryan Van Matre, Joyce Mac Kinnon, Anna Dusick, Michael Justiss*

35	Identifying pragmatic impairment in high-functioning young adults with ASD (HFA): Preliminary results. <i>Wendy Mitchell, Joanne Volden</i>	45	Self-esteem trajectories during middle and late adolescence and their implications for psychosocial development <i>Petr Macek, Ondrej Bousa</i>
36	Floundering or Flourishing College Students: The Role of Substance Use and Prosocial Involvement on Psychological Adjustment <i>Julia Hernandez, Carolyn Barry, Beth Kotchick, Rachel Grover</i>	46	Lessons for Emerging Adulthood that Can Be Learned From Earlier Transitions, Ecological Approaches, and Behavior Problems <i>Rachel White, Kimberly Renk</i>
37	Distinguishing Between Ambivalence and Regrets About Sexual Intercourse <i>Julie Hill, Julia Graber</i>	47	Does Gender Play A Role In Ego-Identity Formation? A Study Of Gender Differences Among Emerging Adults <i>Rojita Abjuam, Judith Kaufman</i>
38	Temperament and Criminal Justice System Involvement : School climate as a moderating factor <i>Katelyn Fitzsimmons, Miriam Ehrensaft, Heather Knous-Westfall, Patricia Cohen</i>	48	The Association Between Positive Body Image and Eating Pathology Among Female Emerging Adults <i>Sarah Jane Norwood, Jennine Rawana</i>
39	Assessing change over time in externalizing and internalizing problems among higher functioning adolescents with autism and typically developing adolescents. <i>Kim Ono, Lauren Usher</i>	49	Growth in self-regulation over the course of adolescence and decreased substance use risk during young adulthood: A study of urban minority young adults <i>Sarah Lowe, Kenneth Griffin, Bianca Acevedo, Gilbert Botvin</i>
40	Racial Socialization as a Moderator between Racial Discrimination and Psychosocial Outcomes in African American College Students. <i>Meeta Banerjee</i>	50	The Foster Youth Stigma Scale: A New Measure Examining the Correlates of Stigmatization Among Former Foster Youth <i>Stephanie Johnson, Christopher Dietrich, Tuppett Yates</i>
41	Characteristics of Emerging Adults With Tattoos <i>Meghan Gillen</i>	51	Good is Not Good Enough? The Roles of Perfectionism and Psychological Control in Depressive Symptoms, Social Anxiety, and Personal Growth Initiative <i>Yi-Ping Hsieh, Jui-Yun Tsai</i>
42	Promoting Mental Health During the Transition into Adulthood: The Protective Role of Body Appreciation on Depressive Symptoms <i>Meghan McPhie, Behzad Hassibi, Jennine Rawana</i>	52	Emerging Effects Of Childhood Temperament And Adolescent Social Support On Objective and Perceived Health In Young Adulthood <i>Brittany Bannon, Chandra Reynolds, Robin Corley, Sally Wadsworth</i>
44	Avoidant Coping Moderates the Relation Between Respiratory Sinus Arrhythmia and Emotion Regulation <i>Mona Yaptangco, Caitlin O'Connor, Chloe Skidmore, Daniel Bride, Sheila Crowell</i>	53	A Longitudinal Study of Family Socioeconomic Status Variables as Predictors of Socio-Emotional Resilience and Academic Achievement in Mentored Youth

*Brittany Morley, Maryann Corsello, R. Bruce Thompson, Bernice Conklin-Powers, Samuel McReynolds*

- 54 A Mixed Methods Content Analysis of the Research Literature in Adolescence and Emerging Adulthood  
*Caitlin Faas, Amanda Griffin*
- 55 Interpreting the Variation in the Educational Trajectories of Latina Teenage Mothers  
*Charlotte Wright, Jayanthi Mistry*
- 56 Are Young Mothers in College At Risk for Stress and Substance Abuse?  
*Di Nguyen, Miriam Ehrensaft, Paul Andersen*
- 57 Adolescence and Pregnancy: Risk and protection in Impoverished Countries  
*Elder Cerqueira-Santos, Othon Melo Neto*
- 58 A Review of Emotion Regulation Among Adolescents and Emerging Adults: Informing a Youth Policy Framework for Healthy Development  
*Jennine Rawana, Hien Nguyen, Sarah Jane Norwood, Meghan McPhie*
- 59 Transition to Adult Health Care for Youth with Autism Spectrum Disorder: Issues and Promising New Directions  
*Karen Kuhlthau, Marji Erickson Warfield, Jill Hurson, Jennifer Delahaye, Morgan Crossman*
- 60 Three Windows: Perspectives on Cultural Heritage Schools for Youth of Polish Immigrants in New Jersey  
*Magdalena Galazyn*
- 61 Race, Crime, and the Life Course  
*Marie DeRousse-Wu*

**Friday, 8:30 am - 9:00 am**

(Event 2-01) Coffee  
Florida Ballroom Foyer  
Friday, 8:30 am - 9:00 am

### 2-01. Coffee with Light Breakfast

**Friday, 9:00 am - 10:40 am**

(Event 2-02) Constructed Paper Symposium  
Meeting Room 7

Friday, 9:00 am - 10:40 am

### 2-02. Psychological and Behavioral Risks: Managing Adversity

*Chair: Judy A. Andrews*

- Trajectories of internalizing problems among war-affected youth in Sierra Leone: The role of risk and protective factors  
*Theresa Betancourt, Ryan McBain, Elizabeth Newnham, Robert Brennan*
- Unraveling the Relationship Between Attention-Deficit Hyperactivity Disorder and Substance Use Disorders in Adolescence and Young Adulthood  
*Molly Nikolas, Joel Nigg*
- Psychological Functioning Predicts Change in Health-Related Quality of Life Among Adolescents and Young Adults With Sickle Cell Disease  
*Jamie Jackson, Kathleen Lemanek, Emily Clough-Paabo, Christine Hanson, Melissa Rhodes*
- DSM-IV Diagnoses in Youths and Young Adults with Intellectual Disability Predicted from Child and Family Characteristics  
*Hans Koot, Karen de Ruiter, Marielle Dekker*

(Event 2-03) Constructed Paper Symposium  
Meeting Room 4

Friday, 9:00 am - 10:40 am

### 2-03. Transitioning from School to Work in Broader Context

*Chair: Ingrid Schoon*

- Blurring Boundaries but Persisting Inequalities: Young Adult Trajectories through School and Work  
*Daniel Potter, Josipa Roksa*
- School to Work Transition: The Role of Adolescent Status and Behavior in the Peer Group  
*Britta Ruschoff, Jan Kornelis Dijkstra, Siegwart Lindenberg, René Veenstra*

- "I Don't Know Where to Start:" Perceptions of Graduating from College during the Great Recession  
*Pamela Aronson*

---

**(Event 2-04) Paper Symposium**

Meeting Room 1

Friday, 9:00 am - 10:40 am

**2-04. Exploring the role of Disinhibition in adaptive and maladaptive outcomes in adolescence and emerging adulthood**

*Chairs: Robert Latzman, Jatin G. Vaidya*

- Exploring the role of Disinhibition in adaptive and maladaptive outcomes in adolescence and emerging adulthood  
*Robert Latzman, Jatin Vaidya*
- The effects of educational experiences on personality development during the transition from adolescence to young adulthood  
*Joshua Jackson, Oliver Ludtke, Ulrich Trautwein, Angela Duckworth, Eli Tsukayama*
- Adolescent developmental differences in prefrontal cortex volume and trait Disinhibition  
*Jatin Vaidya, Peggy Nopoulos, Lindsey Fuhrmeister*
- Executive functioning and externalizing behaviors in late adolescence and early adulthood  
*Robert Latzman, Yuri Shishido, Mariya Malakina*
- Correlates of Changes in "Trait" Disinhibition During Emerging and Young Adulthood  
*Kenneth Sher, Andrew Littlefield*

---

**(Event 2-05) Paper Symposium**

Meeting Room 5-6

Friday, 9:00 am - 10:40 am

**2-05. Impacts of Socioeconomic Status on Transitions from High School into Postsecondary Institutions**

*Chair: Matthew Diemer*

- Impacts of Socioeconomic Status on Transitions from High School into Postsecondary Institutions  
*Matthew Diemer*
- Longitudinal Roles of Pre-College Contexts In Low-Income Youths' Postsecondary Persistence  
*Matthew Diemer, Cheng-Hsien Li*
- Socioeconomic Marginalization and Educational Attainment in Young Adulthood  
*Yijie Wang, Aprile Benner*
- Exploring the Educational Aspirations-Expectations Gap Across Adolescence: Linkages with Family Income and Academic Outcomes  
*Kelly Purtell, Dana Wood*

**Friday, 10:50 am - 12:30 pm**

**(Event 2-06) Invited Views by Two**

Florida Salons I-IV

Friday, 10:50 am - 12:30 pm

**2-06. Diversity in the Transition from Adolescence into Adulthood**

*Chair: Vivian Gadsden*

**Family and Identity across the Transition to Adulthood**

*Speaker 1: Andrew Fuligni*

**Abstract.** Leaving high school is not only about deciding upon one's educational and occupational future. The transition also can have great significance for adolescents' connection to their family and their identification with broader social and cultural groups. Using data from two longitudinal studies that together tracked well over 1000 individuals through high school and into the early twenties, I will review evidence for both change and stability in family relationships and social identities over this transitional period. I also will discuss the role that ethnic background and generational status may play in these changes. Collectively, the quantitative, qualitative, biological, and neuroimaging results obtained from these studies highlight both diverse and normative changes that have great significance for psychological, behavioral, and biological health across this critical transition.



**Biography.** Andrew J. Fuligni, Ph.D. is Professor in the Department of Psychiatry and Biobehavioral Sciences and the Department of Psychology. He also is a Senior Scientist in the Semel Institute for Neuroscience and Human Behavior. Dr.

Fuligni's research focuses on adolescent development among culturally and ethnically diverse populations, with particular attention to teenagers from immigrant Asian and Latin American backgrounds. Receiving his Ph.D. in Developmental Psychology at the University of Michigan, he was a recipient of the American Psychological Association's Boyd McCandless Award for Early Career Contribution to Developmental Psychology, a William T. Grant Faculty Scholars Award, a FIRST award from NICHD, and he is a Fellow in the American Psychological Association and the Association for Psychological Science. Dr. Fuligni currently is an Associate Editor of the journal *Child Development*.

**Hiding in Plain Sight: Racialization, Colorism, and the Intimate Union and Childbearing Behaviors of Adolescent and Young-Adult Rural Mothers**  
*Speaker 2: Linda Burton*

**Abstract.** In this presentation Dr. Burton tells the story about how 25 years of conducting ethnographic studies of intimate unions and childbearing in low-income rural and small town communities led her to serendipitously explore the racialization and colorism experiences of adolescent and young-adult White and African American mothers. She draws on longitudinal data from ethnographies of poor families residing in Pennsylvania to demonstrate how childbearing, intimate unions, racialization, and colorism are intricately linked through several coalescent social forces including: economic restructuring; the decline of patriarchy; increasing race and class inequality; and the in-migration of racial/ethnic minorities to largely White rural communities. She discusses how, for example, some African American teenage girls who are deeply embedded in these communities engage in early interracial childbearing with the hope of

producing a child with a local "color advantage." She also describes the role of serial interracial multiple partner fertility in creating "racial pecking orders" among young African American and White mothers. She concludes with a discussion of the implications of this research for future studies.



**Biography.** Linda M. Burton is the James B. Duke Professor of Sociology at Duke University. She currently serves on the editorial board of the *American Sociological Review* and was recently a member of the Committee on the Science of Research on Families for the Institute of Medicine,

the Advisory Board of the National Center for Marriage and Family Research, the Board of Directors for the Family Process Institute, and the Board of Directors for the Council on Contemporary Families. She is also a recipient of the Family Research Consortium IV Legacy Award and the American Family Therapy Academy Award for Innovative Contributions to Family Research. Dr. Burton directed the ethnographic component of *Welfare, Children, and Families: A Three-City Study* and is principal investigator of a multi-site team ethnographic study (*Family Life Project*) of poverty, family processes, and child development in six rural communities. Her research integrates ethnographic and demographic approaches and examines the roles that poverty and intergenerational family dynamics play in the intimate unions of low-income mothers and the accelerated the life course transitions of children, adolescents, and adults in urban and rural families.

**Friday, 1:30 pm - 3:10 pm**

**(Event 2-07) Constructed Paper Symposium**  
 Meeting Room 1  
 Friday, 1:30 pm - 3:10 pm

**2-07. Issues of Identity and Self-Concept**

*Chair: Michaela D. Meyer*

- Longitudinal factors linked with work-related stress in emerging adults: The long

reach of self-concept and coping with stress in adolescence  
*Seth Schwartz, Inge Seiffge-Krenke*

- Collective Identity as a Framework for Understanding Development in Youth Programs and Longer-Term Outcomes for Emerging Adults  
*Valerie Futch*
- Development of Identity Style in Adolescence and Links With Interpersonal Relationships in Emerging Adulthood  
*Alexander Chan, Gregory Pettit, Jennifer Lansford, Kenneth Dodge, John Bates*
- An Investigation of Sociodemographic Characteristics and Constructions of Happiness in Future Livelihoods for the Contemporary Adolescent Girl  
*Christina Crowe, Fallon Cassidy*

---

(Event 2-08) Constructed Paper Symposium  
Meeting Room 7  
Friday, 1:30 pm - 3:10 pm

### 2-08. Youth at Risk: Continuities and Discontinuities Across the Transition to Adulthood

*Chair: Matthew Diemer*

- Reconnecting Proven-Risk Youth During the Transition to Adulthood: A Dynamic Systems Approach  
*Jonathan Zaff, Kei Kawashima-Ginsberg, Michelle Boyd*
- Individual- and Program-Level Factors Associated With Engagement in Youth Programs  
*Kaylin Greene, Bora Lee, Nicole Constance, Kathryn Hynes*
- Leaving the Nest With No Return: Housing Patterns Among Aged Out Foster Youth  
*Chris Lee*
- Daily Living Skills Deficits in Adolescents with Autism Spectrum Disorders: Implications for Intervention and Adult Outcome  
*Amie Duncan, Somer Bishop*

(Event 2-09) Paper Symposium  
Meeting Room 4  
Friday, 1:30 pm - 3:10 pm

### 2-09. Immigrant Origin Emerging Adulthood in Community College: Contextualized Perspectives

*Chair: Carola Suárez-Orozco*

- Enduring Emerging Adulthood: The Transition to Adulthood for Immigrant Emerging Adults  
*Dalal Katsiaficas, Sandra Dias, Carola Suárez-Orozco*
- Classroom-Level Engagement Differences across Community Colleges Campuses Serving Immigrant Origin Young Adults  
*Stacey Alicea, Sukhmani Singh, Tasha Darbes*
- Immigrant origin young adults' civic engagement and motivators of civic involvement: A qualitative exploration  
*María Hernández, Carola Suárez-Orozco, Marcelo Suárez-Orozco*
- Immigrant Origin Emerging Adulthood in Community College: Contextualized Perspectives  
*Carola Suárez-Orozco*
- Perceptions from theargins: The relationship between perceptions of the campus climate and the academic resilience of immigrant origin emerging adults attending community college  
*Margary Martin, Sakias Casanova, Naila Smith, Carola Suárez-Orozco*

---

(Event 2-10) Paper Symposium  
Meeting Room 5-6  
Friday, 1:30 pm - 3:10 pm

### 2-10. Romantic Relationships and the Transition to Adulthood: Navigating the College Campus Gender Imbalance

*Chair: Vivian Gadsden*

- Romantic Relationships and the Transition to Adulthood: Navigating the College Campus Gender Imbalance  
*Vivian Gadsden*



- Don't lose yourself: Perspectives on self-preservation in the love relationships of Black collegiate women  
*Ahlishia Shipley*
- Partner Choice and Availability: Perceptions of Mate Selection Opportunities among African American College Students  
*Barbara Medley, Rebecca Reviere*
- Race/Ethnicity and Dating on Predominantly White Institutions: A Comparison of Black and Hispanic Female College Students  
*Micere Keels*

**Friday, 3:00 pm - 3:30 pm**

**(Event 2-11) Afternoon Break**  
Florida Ballroom Foyer  
Friday, 3:00 pm - 3:30 pm

### 2-11. Afternoon Coffee Break

**Friday, 3:20 pm - 5:00 pm**

**(Event 2-12) Constructed Paper Symposium**  
Meeting Room 4  
Friday, 3:20 pm - 5:00 pm

### 2-12. Pathways of Antisocial Behavior

*Chair: Hans M. Koot*

- Can Children with Stable High versus High but Decreasing Antisocial Behavior from Age 3 to 18 Years Be Discriminated in Childhood?  
*Hans Koot, Maartje Timmermans, Pol van Lier*
- Pathways to Adulthood for Adolescent Sexual Offenders  
*Margaret Keiley, Ali Zaremba-Morgan, Christiana Datubo-Brown, Aubrey Ryan, Raven Pyle*
- Predictors of persistent criminality into adulthood  
*Joanne Savage, Stephanie Ellis*

---

**(Event 2-13) Constructed Paper Symposium**  
Meeting Room 7  
Friday, 3:20 pm - 5:00 pm

### 2-13. Transitioning into College

*Chair: Megan Patrick*

- Family Interdependence During the Transition to College: A Qualitative Study of Non-White Youths' Support of and From Their Families of Origin  
*Billie Day, Heather Hill*
- Accessing Friend Support and its Impact on Stress and Anxiety Over the Transition to College: A Mixed-Methods Analysis  
*Alice Donlan, Kathryn Wentzel, Shannon Russell*
- Resilience During Students' Transition to College: Towards a Measure of Four Key Resilience Factors  
*Melissa DeRosier, Ashley Craig, Kevin Leary*

---

### (Event 2-14) Paper Symposium

Meeting Room 5-6  
Friday, 3:20 pm - 5:00 pm

### 2-14. Risk Behavior and Decision Making in Juvenile Justice and Child Welfare System Involved Females during the Transition to Adulthood

*Chair: Kimberly A. Rhoades*

- Risk Behavior and Decision Making in Juvenile Justice and Child Welfare System Involved Females during the Transition to Adulthood  
*Kimberly Rhoades*
- Decision Making and the Transition to Adulthood: Gain- and Loss- Related Decision Making for High- versus Low-Risk Girls  
*Joshua Weller, Leslie Leve, Hyoun Kim*
- Partners' Characteristics and Risk for Intimate Partner Violence Among Young Women with a History of Juvenile System Involvement  
*Hyoun Kim, Leslie Leve, Kimberly Rhoades*
- Young Women's Substance use and Partner Delinquency: Associations among Women with Prior Juvenile Justice System Involvement  
*Kimberly Rhoades, Leslie Leve, Hyoun Kim*

(Event 2-15) Paper Symposium

Meeting Room 1  
Friday, 3:20 pm - 5:00 pm

**2-15. The Changing Transition to Adulthood: Historical Variation in the Level, Growth, and Correlates of Substance Use**

*Chair: Justin Jager*

*Discussant: Rand Conger*

- The Changing Transition to Adulthood: Historical Variation in the Level, Growth, and Correlates of Substance Use  
*Justin Jager, Rand Conger*
- Are Heavy Episodic Drinking Patterns in Adolescence Shaped by Birth Cohort Effects? An Examination of Cohort-Specific Social Norms  
*Katherine Keyes, Richard Miech*
- Alcohol Use and the Assumption of Adult Social Roles: Evidence From Two British Age Cohorts  
*Ingrid Schoon, Jeremy Staff, Jennifer Maggs*
- Historical Variation in Transition to Adulthood Substance Use Trajectories: Examining its Scope and Across-Substance Generalizability  
*Justin Jager, John Schulenberg*

**Friday, 5:10 pm - 7:10 pm**

(Event 2-16) Friday Poster Session with Concurrent Reception

Florida Salons V-VI and Florida Ballroom Foyer  
Friday, 5:10 pm - 7:10 pm

- 1 Comparing Novice and Expert Argumentation  
*Ava Constantino, Zhiyao Wei, Amanda Crowell, Mark Felton*
- 2 Child Schooling and Working: Does Poverty Matter?  
*Bijaya Malik*
- 3 Adolescents' Work-Related Motivational Patterns and Change in Career Explorations Over Time  
*Bora Lee, Erik Porfeli*

- 4 Fulfillment of Educational Expectations Predicting Life Course Trajectories of Self-Esteem  
*Caitlin Faas*
- 5 Trapped in Neverland? Future Orientations and the Transition to Adulthood in Sierra Leone  
*Catherine Reidy*
- 6 The Influence of Academic Support, Family Obligations, and Parental Educational Beliefs on the Academic Outcomes of Latino College Students  
*Celeste Mendoza, Pamela Davis-Kean*
- 7 Gender Differences in Career Achievement Among Adopted Emerging Adults  
*Danila Musante, Rachel Farr*
- 8 Race, Gender and Class in Transitions to Adulthood: A Demographic Profile  
*Eric Waithaka, JoAnn Lee*
- 9 Is Education and Work Status Linked to Feeling like an Adult for Rural Youth?  
*Erin Sharp, Corinna Tucker, Cesar Rebellion, Karen Van Gundy*
- 10 Emerging Adults' Educational and Occupational Aspirations in a Declining Rural Economy  
*Corinna Tucker, Genevieve Cox, Erin Sharp, Karen Van Gundy, Cesar Rebellion*
- 11 Trajectories of Marijuana Use from Adolescence to Early Adulthood and Engagement with Postsecondary Education  
*Jacqueline Homel, Kara Thompson, Bonnie Leadbeater*
- 12 Chinese Immigrant Youth Navigating Towards Adulthood: Language is Key  
*Katie Aasland, Jennifer Taub, Jayanthi Mistry*
- 13 Effects of Gender and Grade Level on Negative Classroom Relations  
*Leah Saulter*
- 14 The Role of Mexican American Family Work Contexts on Parent-Adolescent

	Relationships and Youth's Future Orientations <i>Lorey Wheeler, Kimberly Updegraff, Adriana Umaña-Taylor</i>		Emerging Adults' Attitudes toward their Time of Life <i>Carolyn Barry, Casey Rodweller, Larry Nelson</i>
15	Sense of Purpose and Academic Outcomes among a Multi-Ethnic Sample of Urban College Students <i>Sarah Lowe, Colleen Dillon, Jean Rhodes, Stella Kanchewa</i>	24	Predicting Emerging Adults' Attitudes Toward Same-Sex Marriage Using Religiosity, Conservatism, and Components of Authoritarianism <i>Catherine Pearte, Kimberly Renk, Charles Negy</i>
16	Assertive condom negotiation in young couples: Insights from a condom negotiation task <i>Amy Schmid, Noelle Leonard, Amanda Ritchie, Marya Viorst Gwadz</i>	26	Ties that Bind: Dating Partners, Psychological Distress, and the Transition to College <i>Christi Culpepper, Katherine Kivisto, Samantha Gray, Deborah Welsh, Rachel Holmes, Nick Bishop, Teri Preddy, Jerika Norona</i>
17	Discrepancies Between Significant Others' Beliefs and Ambivalence about Sexual Intercourse in Emerging Adults <i>Julie Hill, Joseph Orovecz, Julia Graber</i>	27	Longitudinal Predictors and Correlates of Leadership and Community Embeddedness in Young Adulthood <i>Cynthia Edwards, Kelsey Suttentfield</i>
18	Positive effects of religious-based social support for academic motivation and life satisfaction in adolescents <i>Andrew Cavanagh, Daniela Jopp, Sheena Jeswani</i>	28	Understanding Emerging Adulthood for Immigrant Young Adults: A Qualitative Analysis <i>Dalal Katsiaficas</i>
19	Milestones in Romantic Relationship Development and Attachment Theory <i>Marla Reese-Weber, Ashley Johnson, Heather Hyman, Julie Carlson, Michael Nigro, Kera Widmer</i>	29	Say Yes To the Dress: Understanding the Contributing Role of Neighborhood Context in How Adolescent Girls Consider Marriage in Their Future <i>Fallon Cassidy, Christina Crowe</i>
20	Resisting Risky Behavior: The Moderating Role of Resistance to Peer Influence on Peer Socialization Effects <i>Azeb Gebre</i>	30	Co-Rumination and Problem Solving: An Experimental Study <i>Gizem Iskenderoglu, Nancy Darling</i>
21	The Relationship of Life Stress and Perceived Social Support to Anxiety Symptoms in College Students <i>Brea-Anne Lauer, Jayme Puff, Meagan McSwiggan, Amanda Lowell, Kimberly Renk</i>	31	The Transitions of Dating Aggression from Adolescence to Young Adulthood <i>Hans Saint-Eloi Cadely, Joe Pittman, Gregory Pettit, Jennifer Lansford, John Bates, Kenneth Dodge, Amy Holtzworth-Munroe</i>
22	A Dyadic Perspective on Emergent Adults' Sexual Subjectivity and Sexual Functioning in a Romantic Relationship <i>Brittany Kohlberger, Valerie Simon</i>	32	What's Health Got To Do With It? Chronic Health Issues and Romantic Relationship Trajectories in the Transition to Adulthood <i>Hilary Dotson, Elizabeth Vaquera</i>
23	The Role of Parenting in the Relation between Family Faith Activities and		

- 33 Adolescents' Attachment to Adoptive Parents: Predicting Attachment Styles in Emerging Adulthood  
*Holly Grant-Marsney, Harold Grotevant, Aline Sayer*
- 34 Delinquency Trajectories from Early Adolescence to Early Adulthood in African American and European American Youth: The Role of Parenting  
*Isaura Olivares, Hazel Prelew*
- 35 More Evidence for Four Perfectionism Subgroups  
*Amanda Sironic, Robert Reeve*
- 36 Negative Coping Strategies Mediate the Relationship between Adolescent Insecure Attachment Classifications and Future Externalizing Behaviors  
*Anne Dawson, Emily Marston, Joseph Allen*
- 37 Prenatal Smoke Exposure Predicts ADHD Subtype Longitudinally in a Sample of Girls  
*Arianna Gard, Elizabeth Owens, Stephen Hinshaw*
- 38 Social and Emotional Adjustment to College In Emerging Adulthood: Examining The Role of Dispositional Mindfulness and Coping Styles  
*Aryeh Graber, Judith Kaufman, Sara Markowitz*
- 39 Coping and Video Game Play During Emerging Adulthood  
*Christine Ohannessian*
- 40 Influence of Social Role Status Perceptions and Anticipated Changes on Young Adult Alcohol Use  
*Christine Lee, Megan Patrick, Melissa Lewis*
- 41 Alcohol Expectancies as Moderators of the Association between Social Anxiety and Alcohol Use Among First Semester College Students  
*Christine Walther, Sarah Pedersen, Brooke Molina*
- 42 Self Esteem and Sexual Behavior among Brazilian Adolescents  
*Elder Cerqueira-Santos, Othon Melo Neto*
- 43 Reflections on Diagnosis and Treatment: How Emerging Adults Recount Experiencing Mental Health Disorders in Childhood  
*Elizabeth Bringewatt*
- 44 Identifying When Self-Discrepancies Predict Depressive Symptoms: Formal Operational Thought as a Moderator  
*Erin Stevens, Christine Keeports, Nicole Holmberg, M. Lovejoy, Laura Pittman, Allison Behm*
- 45 Cognitive Coping Skills and Relational Aggression among Youth Transitioning into Emerging Adulthood  
*Hien Nguyen, Jennine Rawana, Paola Ostinelli*
- 46 Women's Pubertal Timing Moderates the Relationship Between Childhood Adversity and Depressive Symptomatology in Adulthood  
*Jeffrey Winer, Sally Powers*
- 47 Behavioral and Interpersonal Correlates of Child-to-Parent Violence  
*Jennifer Lyons, Tessa Bell, Elisa Romano*
- 48 Ego-identity in International Freshman Students and Academic Achievement  
*Jesse Vorasitthanukul, Judith Kaufman, Nael Llaverias*
- 49 Risk and Resiliency Impacting Prostitution Initiation and Desistance of Disadvantaged Girls: A Test of Age-Graded Theory of Informal Social Control  
*Joan Reid*
- 50 The Relation between Biological Reactivity to Stress, Gender and Substance Abuse in Emerging Adulthood  
*Judy Andrews, Sarah Hampson, Missy Peterson*
- 51 Associations of Early Maternal Depression to Executive Functioning at Age 18: The Moderating Role of Temperament  
*Michelle Comas, Kristin Valentino, John Borkowski*

- 52 Developing Community Capacity to Support Young Adults with Mental Health Challenges  
*Nancy Koroloff, Janet Walker*
- 53 The transition from adolescence to adulthood for youth with disabilities: Revisiting theory as a springboard for new possibilities in research  
*Radha MacCulloch*
- 54 Transitioning Youth who are Cognitively Disabled and Medically Fragile  
*Rebekah Phillips, Linda Sperry*
- 55 The Influence of Parental Alcoholism on Sibling Relationships from Childhood Through Emerging Adulthood: A Retrospective Approach  
*Sarah Bickelhaupt, Brenda Lohman*
- 56 Youth Initiated Mentoring: Exploring a New Model of Mentoring in the National Guard Youth ChalleNGe Program  
*Sarah Schwartz, Stella Kanchewa, Renee Spencer, Jean Rhodes*
- 57 Examining Emerging Adulthood Through the Life Stories of Young Adult Cancer Survivors  
*Stefanie Vuotto, Mary Procidano, Harjot Nayar, Christopher Coyne, Christina Rooney, Brittany Hogan*
- 58 Translational Research on the Transition to Adulthood  
*Stephen Hamilton, Mary Hamilton*
- 59 Age of Licensure and Alcohol use Disorders  
*Tara Kelley-Baker, Robert Voas, Eduardo Romano, Julie Yao*
- 60 Differences in Day-to-Day Process Among Negative Affect, Substance Use Cravings, and Positive Social Experiences in Recovery Maintenance  
*Yao Zheng, H. Harrington Cleveland, Peter Molenaar, Kitty Harris*

Saturday, 8:30 am - 9:00 am

(Event 3-01) Coffee  
Florida Ballroom Foyer  
Saturday, 8:30 am - 9:00 am

### 3-01. Coffee with Light Breakfast

Saturday, 9:00 am - 10:40 am

(Event 3-02) Invited Views by Two  
Florida Salons I-IV  
Saturday, 9:00 am - 10:40 am

### 3-02. The Transition into Adulthood Within the Context of the Life Course

*Chair: Barbara Schneider*

**Successful transitions to adulthood: What about the forgotten half?**  
*Speaker 1: Ingrid Schoon*

**Abstract.** Most studies on the transition to adulthood have focused on extended transitions and associated evaluations. Less is known about 'the forgotten half', i.e. those young people who leave school early and make a fast track transition to independent adult status involving independent living, full-time employment and the step into family formation by their early to mid-twenties. This paper asks whether the early assumption of adult roles is necessarily a 'bad thing'. Based on evidence from different nationally representative and longitudinal studies of young people born in the UK, the US and Finland, the antecedents and outcomes associated with various fast versus slow transitions are examined across time and place. The findings suggest that there are multiple pathways to positive adult functioning, including the successful negotiation of multiple transitions by age 26. In particular, the active engagement in and commitment to meaningful social roles during the mid-twenties is associated with high levels of life satisfaction and wellbeing, highlighting the importance of reaching objective developmental tasks during the transition to adulthood. The implications of the findings are discussed in terms of a developmental-contextual model of youth transitions, taking into account the dynamic and reciprocal interactions between structure and agency.



**Biography.** Ingrid Schoon is Professor of Human Development and Social Policy at the Institute of Education, University of London. She is Research Director of the Centre for Youth Transitions (CAYT) funded by the Department of Education, and is coordinating the

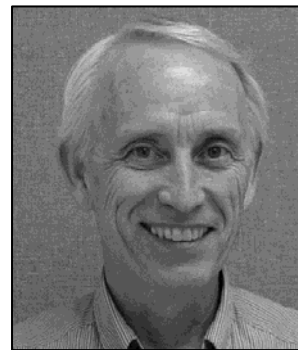
international post-doctoral Jacobs Foundation Fellowship 'PATHWAYS to Adulthood'. Her research interests are focused on issues of human development across the life course, in particular the transition from dependent childhood to independent adulthood, the study of risk and resilience, the realization of individual potential in a changing socio-historical context, social and gender equalities in attainment, health and well-being, and the intergenerational transmission of (dis)advantage. Her research has been continuously supported by the UK Economic and Social Research Council, the Leverhulme Trust, and the Nuffield Foundation. She is currently consulting editor for 'Developmental Psychology', and is member of the editorial board of the 'Journal of Adolescence, the 'European Psychologist', 'Advances in Life Course Research', and 'Longitudinal and Life Course Studies'. Her publications include over 100 scholarly articles, a monograph on 'Risk and Resilience', and an edited book on 'Transitions from school-to-work', both published by Cambridge University Press.

### **An Interactionist Perspective on SES and Human Development across Generations**

*Speaker 2: Rand Conger*

**Abstract.** Earlier research demonstrates intergenerational continuity in socioeconomic status (SES), family characteristics, and individual differences. In this presentation I consider the degree to which these continuities follow a predictable pattern involving the interplay between SES and individual development across three generations of family members. Traditional approaches to understanding the relationship between SES and human development have typically taken one of two approaches. Some investigators have advocated the social causation view and examined the degree to which SES predicts variation in human development. Other

researchers have proposed that later differences in income, occupational status and social standing derive from earlier individual characteristics - the social selection perspective. This presentation considers evidence from a 22 year study of families and children and demonstrates that, over time, both social causation and selection play a role in the association between SES and human development, consistent with an emerging interactionist perspective. Results from this study shed new light on the processes through which earlier SES and family characteristics in one generation tend to replicate in the next generation of families and children during the transition to adulthood.



**Biography.** Rand Conger is a Distinguished Professor of Psychology, Human Development and Family Studies at the University of California - Davis. He received his doctoral degree in sociology from the University of Washington in 1976

and has also been a faculty member at the University of Georgia, the University of Illinois at Urbana/Champaign, and Iowa State University. Dr. Conger's program of research focuses on social, cultural and individual characteristics that either promote successful development or lead to significant developmental problems. Results of his research with over 500 white families in rural Iowa demonstrated that financial pressures can create severe strains in family relationships which, in turn, increase emotional and behavioral problems for both parents and children. This work also identified individual and family strengths that increase resilience to developmental problems in the face of adversity. His more recent studies suggest that this economic stress process is quite similar for African American and Mexican American families. Dr. Conger has published over 250 books, book chapters and journal articles and his research has been supported by a series of federal grants from the National Institutes of Health. In addition, the significance of his scholarly activities has been recognized through several awards from professional organizations.

Saturday, 10:50 am - 12:30 pm

**(Event 3-03) Constructed Paper Symposium**

Meeting Room 1

Saturday, 10:50 am - 12:30 pm

**3-03. Adjustment and Functioning in College**

*Chair: Jeremy Staff*

- Trajectories of Alcohol Use in Different Educational Contexts: Comparing Postsecondary Institutions  
*Kara Thompson, Jacqueline Homel, Timothy Stockwell, Bonnie Leadbeater*
- Developmental Assets and Successful Transitions in Undergraduate College Students  
*John Hagen, Casey Smith*
- Emerging Adult College Students' Perceptions of the Communicative Benefits of Parental Facebook Usage  
*Michaela Meyer, Jeremy Colb*

**(Event 3-04) Constructed Paper Symposium**

Meeting Room 7

Saturday, 10:50 am - 12:30 pm

**3-04. Cultural Similarities and Differences in Adolescent and Young Adult Relationships**

*Chair: Mrinalini A. Rao*

- Protective Processes and Resilience in Somali Refugee Families  
*Theresa Betancourt, Saida Abdi, Naima Agalab, Brandon Ito, Heidi Ellis*
- Mapping the Future: Indian Adolescents' Visions of Their Future in the Context of Globalization  
*Mrinalini Rao, Robert Roeser*
- Cultural Correlates of Attitudes about Marriage and Cohabitation among Mexican-Origin Youth  
*Lorey Wheeler, Susan McHale, Adriana Umaña-Taylor, Norma Perez-Brena, Kimberly Updegraff*

- Social and Cultural Factors in Adolescent Self-disclosure: Empirical Findings from China

*Min Chen-Gardini*

**(Event 3-05) Constructed Paper Symposium**

Meeting Room 4

Saturday, 10:50 am - 12:30 pm

**3-05. Youths' Experiences with Service Systems**

*Chair: Charles E. Irwin*

- The role of mentors in the lives of young adults who have aged out of the child welfare system  
*Julia Pryce, Laura Napolitano, Gina Samuels*
- Functional Impairments and Service Use of Transition-Age Youth Exposed to Trauma: Findings from the National Child Traumatic Stress Network (NCTSN) Core Data Set  
*Johanna Greeson, Ernestine Briggs-King, Christopher Layne, John Fairbank*
- Access to Health Care in the Transition to Adulthood: New Policies & Guidelines and Considerations for Vulnerable Youths  
*Charles Irwin, Claire Brindis, M. Park*
- Coping in Context: The Role of Resource Availability on Coping Effectiveness Among Emancipated Foster Youth  
*Izabela Grey, Sara Berzenski, Lauren Aaron, Tuppert Yates*

**(Event 3-06) Paper Symposium**

Meeting Room 5-6

Saturday, 10:50 am - 12:30 pm

**3-06. The Significance of Adolescent Competence, Expectancies, and Personality in Predicting Work and Education in Early Adulthood**

*Chair: Katariina Salmela-Aro*

*Discussant: Jeylan T. Mortimer*

- Transition from Adolescent to Adulthood: Trajectories of Educational Expectations  
*Katariina Salmela-Aro, Asko Tolvanen, Lotta Tynkkynen*

- The Role of Soft Skills for Young People's Earnings Shortly After Labor Force Entry  
*Marlis Buchmann, Irene Kriesi*
- The Prediction of Early Adult Work Competence and Educational Attainment from Relationships and Motivation in Adolescence

*Michelle Englund, Sally I-Chun Kuo,  
Manfred van Dulmen, Andrew Collins*

- The Significance of Adolescent Competence, Expectancies, and Personality in Predicting Work and Education in Early Adulthood  
*Katariina Salmela-Aro, Jeylan Mortimer*



## Author Index

- Aaron, Lauren**  
lauren.aaron@  
email.ucr.edu  
3-05
- Aasland, Katie**  
aasland.k@gmail.com  
2-16 (12)
- Abdi, Saida**  
saida.abdi@childrens.harv  
ard.edu  
3-04
- Abjuam, Rojita**  
rojitaabujam@gmail.com  
1-16 (47)
- Abraham, Michelle M.**  
abrahamm@muohio.edu  
1-16 (26)
- Acevedo, Bianca P.**  
bia2006@med.cornell.edu  
1-16 (49)
- Agalab, Naima**  
naima\_y.riac@verizon.net  
3-04
- Alicea, Stacey**  
stacey.alicea@gmail.com  
2-09
- Allen, Joseph P.**  
allen@virginia.edu  
1-07, 2-16 (36)
- Andersen, Paul**  
paul.andersen@  
jjay.cuny.edu  
1-16 (7), (56)
- Anderson, Edward R.**  
edward.anderson@  
mail.utexas.edu  
1-12
- Andrews, Judy A.**  
judy@ori.org  
2-16 (50)
- Antonio, Anthony**  
aantonio@stanford.edu  
1-09
- Arnone, Gina**  
garnone@dolphin.  
upenn.edu  
1-03
- Aronson, Pamela**  
aronsonp@umd.umich.edu  
2-03
- Banerjee, Meeta**  
banerje4@msu.edu  
1-16 (40)
- Bannon, Brittany L.**  
bbannon02@ucr.edu  
1-16 (52)
- Barber, Brian K.**  
bbarber1@utk.edu  
1-13
- Barnes, Matthew**  
Matt.Barnes@natcen.ac.uk  
1-05
- Barry, Carolyn M.**  
cbarry@loyola.edu  
1-12, 1-16 (36), 2-16 (23)
- Bartoszuk, Karın**  
bartoszu@etsu.edu  
1-16 (18)
- Bates, John**  
batesj@indiana.edu  
2-07, 2-16 (31)
- Bauer, Dan**  
dbauer@unc.edu  
1-04
- Bauer, Daniel J.**  
dbauer@email.unc.edu  
1-13
- Bauldry, Shawn**  
sbauldry@email.unc.edu  
1-02
- Behm, Allison**  
abehm913@gmail.com  
2-16 (44)
- Bell, Tessa**
- tbell077@uottawa.ca**  
2-16 (47)
- Belli, Robert**  
bbelli2@unlnotes.unl.edu  
1-13
- Benner, Aprile**  
abenner@prc.utexas.edu  
1-15, 2-05
- Bennett, Pamela**  
pbennett@jhu.edu  
1-16 (21)
- Berzenski, Sara R.**  
sara.berzenski@email.  
ucr.edu  
3-05
- Betancourt, Theresa S.**  
Theresa\_Betancourt@  
harvard.edu  
2-02, 3-04
- Bettinger, Eric**  
ebetting@stanford.edu  
1-09
- Bickelhaupt, Sarah**  
filly@iastate.edu  
2-16 (55)
- Bishop, Nick**  
nbishop8@utk.edu  
2-16 (26)
- Bishop, Somer L.**  
Somer.Bishop@cchmc.org  
2-08
- Blomquist, Katrina**  
katrina.poetzl@duke.edu  
1-16 (20)
- Blonigen, Daniel**  
dmblonigen@gmail.com  
1-14
- Borkowski, John G.**  
John.G.Borkowski.1@nd.e  
du  
2-16 (51)
- Botvin, Gilbert J.**
- gjbotvin@med.cornell.edu**  
1-16 (49)
- Boucher, Alexandra**  
alexandra.boucher@uqac.  
ca  
1-16 (15)
- Boudreault-Bouchard,  
Anne-Marie**  
ann\_ma18@hotmail.com  
1-16 (15)
- Bousa, Ondrej**  
bousa@fss.muni.cz  
1-16 (45)
- Boyd, Michelle**  
michelle.boyd@tufts.edu  
2-08
- Brennan, Robert**  
Robert\_Brennan@harvard.  
edu  
2-02
- Bride, Daniel L.**  
danielbride86@gmail.com  
1-16 (44)
- Briggs-King, Ernestine**  
ernestine.briggs@dm.duke  
.edu  
3-05
- Brindis, Claire**  
claire.brindis@ucsf.edu  
3-05
- Bringewatt, Elizabeth**  
betsyhb@umich.edu  
2-16 (43)
- Brion-Meisels, Gretchen**  
gab196@mail.harvard.edu  
1-03
- Bruss, Nathan**  
nbruss@kent.edu  
1-12
- Buchmann, Marlis**  
buchmann@  
jacobscenter.uzh.ch  
3-06

<b>Buhrmester, Michael D.</b> buhrmester@gmail.com 1-16 (25)	jmc4ja@virginia.edu 1-07	<b>Constance, Nicole</b> nfc108@psu.edu 2-08	<b>Culpepper, Christi L.</b> cculpep3@utk.edu 2-16 (26)
<b>Burfeind, Chelsea</b> chelsea.burfeind1@gmail.com 1-08	<b>Chassin, Laurie</b> laurie.chassin@asu.edu 1-04	<b>Constantino, Ava</b> apc30@pitt.edu 2-16 (1)	<b>Curran, Patrick</b> curran@unc.edu 1-04
<b>Burton, Linda</b> lburton@soc.duke.edu 2-06	<b>Chen-Gaddini, Min</b> min.chen@sjsu.edu 3-04	<b>Corley, Robin P.</b> robin.corley@colorado.edu 1-16 (52)	<b>D'Sa, Nikhit</b> nikhit_dsa@mail.harvard.edu 1-03
<b>Campbell, Frances</b> frances.campbell@unc.edu 1-08	<b>Christofferson, Jennifer L.</b> jlchristofferson74@gmail.com 1-12	<b>Corsello, Maryann C.</b> mcorsello@une.edu 1-16 (53)	<b>Dahl, Ron</b> rondahl@berkeley.edu 1-06
<b>Cannarella, Amanda</b> amanda.cannarella@bc.edu 1-16 (3)	<b>Cleveland, H. Harrington</b> hhc10@psu.edu 2-16 (60)	<b>Courtney, Mark</b> markc@uchicago.edu 1-08	<b>Daly-Cano, Meada</b> meadadaly@hotmail.com 1-03
<b>Cannavina, Megan</b> megancannavina@bc.edu 1-16 (3)	<b>Cleveland, Michael J.</b> mccleveland@psu.edu 1-07	<b>Cox, Genevieve</b> youngingerb@gmail.com 2-16 (10)	<b>Darbes, Tasha</b> tashalyn2@gmail.com 2-09
<b>Carlson, Julie</b> jcarlo@ilstu.edu 2-16 (19)	<b>Clough-Paabo, Emily</b> emily.clough-paabo@nationwidechildrens.org 2-02	<b>Coyne, Christopher</b> ccooyne@fordham.edu 2-16 (57)	<b>Darling, Nancy</b> ndarling@oberlin.edu 1-16 (28), 2-16 (30)
<b>Casanova, Sakias</b> saskias.casanova@nyu.edu 2-09	<b>Cohen, Patricia</b> prc2@columbia.edu 1-16 (38)	<b>Craig, Ashley</b> craig@3cisid.com 2-13	<b>Datubo-Brown, Christiana</b> cad0014@auburn.edu 2-12
<b>Cassidy, Fallon</b> cassidy.f@husky.neu.edu 2-07, 2-16 (29)	<b>Colb, Jeremy M.</b> jeremy.colb.06@cnu.edu 3-03	<b>Crosnoe, Rob</b> crosnoe@austin.utexas.edu 1-15	<b>Davis-Kean, Pamela</b> pdakean@isr.umich.edu 2-16 (6)
<b>Castleman, Benjamin</b> castle@fas.harvard.edu 1-09	<b>Collins, Andrew</b> wcollins@umn.edu 3-06	<b>Crossman, Morgan</b> mcrossman@brandeis.edu 1-16 (59)	<b>Dawson, Anne E.</b> aed2k@virginia.edu 2-16 (36)
<b>Cavanagh, Andrew</b> acavanagh@fordham.edu 2-16 (18)	<b>Comas, Michelle</b> mcomas@nd.edu 2-16 (51)	<b>Crowe, Christina C.</b> c.cipriano@neu.edu 2-16 (29)	<b>Day, Billie J.</b> bjday@uchicago.edu 2-13
<b>Cerqueira-Santos, Elder</b> eldercerqueira@yahoo.com.br 1-16 (57), 2-16 (42)	<b>Comer, Carly</b> cdc5105@psu.edu 1-07	<b>Crowe, Christina C.</b> chriscipcrowe@gmail.com 2-07	<b>de Rooter, Karen P.</b> kpderooter@gmail.com 2-02
<b>Chan, Alexander E.</b> aec0024@auburn.edu 2-07	<b>Conger, Rand</b> rdconger@ucdavis.edu 2-15, 3-02	<b>Crowell, Amanda</b> crowell@pitt.edu 2-16 (1)	<b>Dean, Danielle</b> deand@email.unc.edu 1-02, 1-13
<b>Chango, Joanna M.</b>	<b>Conklin-Powers, Bernice</b> bconklinpowers@usm.maine.edu 1-16 (53)	<b>Crowell, Sheila E.</b> sheila.crowell@psych.utah.edu 1-16 (44)	<b>Dekker, Marielle C.</b> dekkerm@leidenuniv.nl 2-02

Delahaye, Jennifer  
jdelahaye@partners.org  
1-16 (59)

Delgado, Melissa  
melissa.y.delgado@gmail.com  
1-16 (5)

Dennison, Renée P.  
rpdennison@smcm.edu  
1-16 (19)

DeRosier, Melissa  
derosier@3cisid.com  
2-13

DeRousse-Wu, Marie  
gray0455@umn.edu  
1-16 (61)

Dias, Sandra I.  
sid214@nyu.edu  
2-09

Diemer, Matthew  
diemerm@msu.edu  
2-05

Dietrich, Christopher  
chris.dietrich@gmail.com  
1-16 (50)

Dijkstra, Jan Kornelis  
jan.dijkstra@rug.nl  
2-03

Dillon, Colleen O.  
codillon@u.washington.edu  
2-16 (15)

Dion, Jacinthe  
jacinthe\_dion@uqac.ca  
1-16 (15)

Doane, Leah D.  
Leah.Doane@asu.edu  
1-02

Dodge, Kenneth  
dodge@duke.edu  
2-07, 2-16 (31)

Donlan, Alice E.  
adonlan@umd.edu  
2-13

Dotson, Hilary M.  
hdotson@mail.usf.edu  
2-16 (32)

Doty, Jennifer L.  
dotyX093@umn.edu  
1-16 (17)

Doughty, Susan E.  
sed201@psu.edu  
1-16 (31)

Duckworth, Angela  
duckwort@psych.upenn.edu  
2-04

Duckworth, Kathryn  
K.Duckworth@ioe.ac.uk  
1-05

Duncan, Amie  
amie.duncan@cchmc.org  
2-08

Durbin, C. E.  
cdurbin@msu.edu  
1-14

Dusick, Anna  
adusick@pediatrics.wisc.edu  
1-16 (34)

Dworkin, Jodi  
jdworkin@umn.edu  
1-16 (17)

Eccles, Jacquelynne S.  
jeccles@umich.edu  
1-16 (12)

Edwards, Cynthia A.  
EdwardsC@meredith.edu  
2-16 (27)

Ehrensft, Miriam  
miriam.ehrensft@jjay.cuny.edu  
1-16 (38)

Ehrensft, Miriam K.  
doctoreh@me.com  
1-16 (7), 1-16 (56)

Ellis, Heidi  
heidi.ellis@childrens.harvard.edu

2-04

Ellis, Stephanie  
sellis@marymount.edu  
2-12

Englund, Michelle  
englu008@umn.edu  
3-06

Erickson Warfield, Marji  
mew@brandeis.edu  
1-16 (59)

Estacion, Angela  
aestacion@jhu.edu  
1-16 (21)

Evans, Brent  
bjevans@stanford.edu  
1-09

Faas, Caitlin  
caitlin.faas@gmail.com  
1-16 (54), 2-16 (4)

Fairbank, John  
john.fairbank@dm.duke.edu  
3-05

Farr, Rachel  
rfarr@psych.umass.edu  
2-16 (7)

Favero, Sarah  
sdf5013@psu.edu  
1-07

Feeney, Sarah L.  
sarah.feeney@wsu.edu  
1-16 (10)

Felton, Mark  
mark.felton@sjsu.edu  
2-16 (1)

Fitzsimmons, Katelyn  
katelyn.fitzsimmons@jjay.cuny.edu  
1-16 (38)

Forrest-Bank, Shandra S.  
Shandrafb@gmail.com  
1-16 (11)

Fuhrmeister, Lindsey

lindsey-fuhrmeister@uiowa.edu  
2-04

Fuligni, Andrew  
afuligni@ucla.edu  
2-06

Futch, Valerie A.  
vfutch@virginia.edu  
2-07

Gadsden, Vivian  
viviang@gse.upenn.edu  
1-10, 2-10

Galazyn, Magdalena  
magdalena.galazyn@gmail.com  
1-16 (60)

Gard, Arianna  
arianna.gard@gmail.com  
2-16 (37)

Gebre, Azeb  
azeb.gebre@temple.edu  
2-16 (20)

Gerrard, Meg  
Meg.Gerrard@dartmouth.edu  
1-07

Gervais, Jennifer  
jennifer.gervais@uqac.ca  
1-16 (15)

Gibbons, Frederick  
Frederick.x.gibbons@dartmouth.edu  
1-07

Gillen, Meghan M.  
mmg204@psu.edu  
1-16 (41)

Graber, Aryeh  
graberaj@gmail.com  
2-16 (38)

Graber, Julia A.  
jagraber@ufl.edu  
1-16 (37), 2-16 (17)

Grant-Marsney, Holly  
hgrant@psych.umass.edu  
2-16 (33)

Gray, Samantha  
sgray19@utk.edu  
2-16 (26)

Greene, Kaylin  
kmg312@psu.edu  
1-04, 2-08

Greeson, Johanna  
johanna.greeson@  
dm.duke.edu  
3-05

Grein, Katherine A.  
kagrein@smcm.edu  
1-16 (19)

Grey, Izabela K.  
kgrey79@gmail.com  
3-05

Griffin, Amanda  
roxanna.a.griffin@  
gmail.com  
1-16 (54)

Griffin, Kenneth W.  
kgriffin@med.cornell.edu  
1-16 (49)

Grotevant, Harold  
hgroteva@psych.  
umass.edu  
2-16 (33)

Grover, Rachel  
RLGrover@loyola.edu  
1-12, 1-16 (36)

Hagen, John W.  
jwhagen@umich.edu  
3-03

Haggerty, Kevin  
haggerty@uw.edu  
1-02

Hamilton, Mary A.  
mah15@cornell.edu  
1-16 (2), 2-16 (58)

Hamilton, Stephen F.  
sfh3@cornell.edu  
1-16 (2), 2-16 (58)

Hammad, Olfat  
olfat@pcpsr.org  
1-13

Hampson, Sarah E.  
Sarah@ori.org  
2-16 (50)

Hanson, Christine  
christine.hanson@  
nationwidechildrens.org  
2-02

Harden, Kathryn P.  
harden@psy.utexas.edu  
1-07

Hare, Amanda  
ahare2@une.edu  
1-07

Harmon, Mackenzi  
mmharmo@ilstu.edu  
1-16 (6)

Harris, Kitty S.  
Kitty.S.Harris@ttu.edu  
2-16 (60)

Hassibi, Behzad  
bhassibi@yorku.ca  
1-16 (42)

Hauser-Cram, Penny  
hausercr@bc.edu  
1-16 (3)

Heckhausen, Jutta  
heckhaus@uci.edu  
1-05

Her, Leena  
Lher1@kennesaw.edu  
1-10

Hernandez, Julia  
hernandez.juliam@  
gmail.com  
1-16 (36)

Hernández, María G.  
mgh260@nyu.edu  
2-09

Heyman, Miriam  
miriam.grill-  
abramowitz@bc.edu  
1-16 (3)

Hicks, Brian M.  
brianhic@med.umich.edu  
1-14

Hill, Heather D.  
hhill@uchicago.edu  
2-13

Hill, Julie C.  
juliehill@ufl.edu  
1-16 (37), 2-16 (17)

Hinshaw, Stephen P.  
hinshaw@berkeley.edu  
2-16 (37)

Hogan, Brittany  
brittahogan@gmail.com  
2-16 (57)

Holmberg, Nicole J.  
nicole.j.holmberg@  
gmail.com  
2-16 (44)

Holmes, Rachel  
rholmes6@utk.edu  
2-16 (26)

Holmes, Tabitha  
holmest@newpaltz.edu  
1-16 (13)

Holtzworth-Munroe, Amy  
holtzwor@indiana.edu  
2-16 (31)

Homel, Jacqueline B.  
jhommel@uvic.ca  
2-16 (11), 3-03

Hornig, Eileen  
ehornig@gmail.com  
1-09

Hospital, Michelle  
hospitam@fiu.edu  
1-16 (22)

Hsieh, Yi-Ping  
yiping66@gmail.com  
1-16 (51)

Hurson, Jill  
jhurson@partners.org  
1-16 (59)

Hussong, Andrea  
Hussong@unc.edu  
1-04

Hyman, Heather  
hrhyman@gmail.com  
2-16 (19)

Hynes, Kathryn  
kbh13@psu.edu  
2-08

I-Chun Kuo, Sally  
kuox053@umn.edu  
3-06

Irwin, Charles E.  
charles.irwin@ucsf.edu  
3-05

Iskenderoglu, Gizem  
gizem.iskenderoglu@  
gmail.com  
2-16 (30)

Ito, Brandon  
brandonito@gmail.com  
3-04

Jackson, Jamie L.  
jamie.jackson2@  
nationwidechildrens.org  
2-02

Jackson, Joshua J.  
j.jackson@wustl.edu  
2-04

Jager, Justin  
jagerjo@mail.nih.gov  
2-15

Jarvis, Patricia A.  
pajarvis@ilstu.edu  
1-16 (6)

Jayaram, Lakshmi  
ljaya@vt.edu  
1-16 (21)

Jenson, Jeffrey  
Jeffrey.Jenson@DU.edu  
1-16 (11)

Jeswani, Sheena  
sheena.jeswani@  
gmail.com  
2-16 (18)

Johnson, Ashley  
ajjohns@ilstu.edu  
2-16 (19)

<b>Johnson, Monica K.</b> monicakj@wsu.edu 1-16 (10)	<b>mkefalas@sju.edu</b> 2-03	<b>BAKotchick@loyola.edu</b> 1-16 (36)	<b>Layne, Christopher</b> CMLayne@mednet. ucla.edu 3-05
<b>Johnson, Stephanie</b> sjohn020@ucr.edu 1-16 (50)	<b>Keiley, Margaret K.</b> keilemk@auburn.edu 2-12	<b>Kreniske, Philip</b> kreniske@gmail.com 1-16 (9)	<b>Leadbeater, Bonnie</b> bleadbea@uvic.ca 2-16 (11), 3-03
<b>Johnson, Wendy</b> wendy.johnson@ed.ac.uk 1-14	<b>Kelley-Baker, Tara</b> Kelley-b@pire.org 2-16 (59)	<b>Kretsch, Natalie</b> natalie.kretsch@ gmail.com 1-07	<b>Leary, Kevin</b> leary@3cisd.com 2-13
<b>Jones, Samantha K.</b> jonessk@goldmail. etsu.edu 1-16 (18)	<b>Kendig, Sarah</b> skendig@prc.utexas.edu 1-15	<b>Kriesi, Irene</b> kriesi@jabobcenter.uzh.ch 3-06	<b>Lee, Bora</b> boralee@psu.edu 2-08, 2-16 (3)
<b>Jopp, Daniela</b> jopp@fordham.edu 2-16 (18)	<b>Keyes, Katherine M.</b> kmk2104@columbia.edu 2-15	<b>Kuehn, Amber</b> kuehnae@muohio.edu 1-16 (26)	<b>Lee, Chris</b> clee07@berkeley.edu 2-08
<b>Judy, Justina</b> judyjust@msu.edu 1-09	<b>Khawand, Christopher</b> khawandc@msu.edu 1-09	<b>Kuhlthau, Karen</b> kkuhlthau@partners.org 1-16 (59)	<b>Lee, Christine</b> leecm@uw.edu 2-16 (40)
<b>Justiss, Michael</b> mjustiss@iupui.edu 1-16 (34)	<b>Kim, Hyoun</b> hyounk@oslc.org 2-14	<b>Kuryluk, Amanda</b> amanda.kury@gmail.com 1-16 (30)	<b>Lee, JoAnn</b> jsl11@uw.edu 2-16 (8)
<b>Kanchewa, Stella</b> Stella.Kanchewa001@ umb.edu 2-16 (15), 2-16 (56)	<b>Kim, Ji-Yeon</b> jiyeonk@hawaii.edu 1-12	<b>Ladadweh, Waleed</b> waleed@pcpsr.org 1-13	<b>Lee, Tae Kyoung</b> ltk501@uga.edu 1-13
<b>Katsiaficas, Dalal</b> dalal@nyu.edu 2-09, 2-16 (28)	<b>Kivisto, Katherine</b> katherine_little_kivisto@ brown.edu 2-16 (26)	<b>Lam, Chun Bun</b> cxl445@psu.edu 1-12, 1-16 (31)	<b>Lemanek, Kathleen L.</b> kathleen.lemanek@nation widechildrens.org 2-02
<b>Kaufman, Judith</b> judith@fdu.edu 1-16 (47), 2-16 (38), 2-16 (48)	<b>Klipfel, Katherine M.</b> kklipfel@kent.edu 1-07, 1-12	<b>Landberg, Monique</b> monique.landberg@ uni-jena.de 1-16 (4)	<b>Leonard, Noelle</b> nrl4@nyu.edu 2-16 (16)
<b>Kawashima-Ginsberg, Kei</b> kei.kawashima_ginsberg@ tufts.edu 2-08	<b>Knous-Westfall, Heather</b> heather.knousw@ gmail.com 1-16 (38)	<b>Langlais, Michael R.</b> mickey.langlais@ gmail.com 1-12	<b>Leve, Leslie D.</b> lesliel@oslc.org 2-14
<b>Keels, Micere</b> micere@uchicago.edu 1-03, 1-10, 2-10	<b>Kohlberger, Brittany</b> bkohl@wayne.edu 2-16 (22)	<b>Lansford, Jennifer</b> lansford@duke.edu 2-07, 2-16 (31)	<b>Lewis, Melissa</b> lewisma@uw.edu 2-16 (40)
<b>Keeports, Christine</b> ckeeports@gmail.com 2-16 (44)	<b>Koot, Hans M.</b> j.m.koot@vu.nl 2-02, 2-12	<b>Latzman, Robert</b> rlatzman@gsu.edu 2-04	<b>Li, Cheng-Hsien</b> lichengh@msu.edu 2-05
<b>Kefalas, Maria</b>	<b>Koroloff, Nancy</b> koroloff@pdx.edu 2-16 (52)	<b>Lauer, Brea-Anne</b> breaanne.wagner@ yahoo.com 2-16 (21)	<b>Li, Miao</b> miao.li@uky.edu 1-16 (24)

Lindenberg, Siegwart  
s.m.lindenberg@rug.nl  
2-03

Listwan, Shelley J.  
slistwan@uncc.edu  
1-12

Littlefield, Andrew K.  
akl9af@mail.missouri.edu  
2-04

Llaverias, Nael  
llaveriasnael@  
hotmail.com  
2-16 (48)

Lohman, Brenda J.  
blohman@iastate.edu  
2-16 (55)

Love, Keisha  
keisha.love@uky.edu  
1-16 (24)

Lovejoy, M. C.  
mlovejoy@niu.edu  
2-16 (44)

Lowe, Sarah R.  
srloewe@gmail.com  
1-16 (49), 2-16 (15)

Lowell, Amanda  
lowellama@knights.  
ucf.edu  
2-16 (21)

Ludtke, Oliver  
oliver.leudtke@  
huberlin.de  
2-04

Lutz, Amy  
aclutz@maxwell.syr.edu  
1-16 (21)

Lyons, Jennifer M.  
jlyon019@uottawa.ca  
2-16 (47)

Mac Kinnon, Joyce  
jmackinn@iupui.edu  
1-16 (34)

MacCulloch, Radha  
radha.macculloch@  
mail.mcgill.ca  
2-16 (53)

Macek, Petr  
macek@fss.muni.cz  
1-16 (45)

Maggs, Jennifer L.  
jmaggs@psu.edu  
1-04, 2-15

Mahrer, Nicole E.  
nicole.mahrer@asu.edu  
1-08

Malakina, Mariya  
mmalakina1@  
student.gsu.edu  
2-04

Malanchuk, Oksana  
oksana@umich.edu  
1-16 (12)

Malik, Bijaya K.  
bijayancert@gmail.com  
2-16 (2)

Mallett, Kimberly  
kmallett@psu.edu  
1-07, 1-16 (22)

Markowitz, Sara  
sara.markowitz@  
gmail.com  
2-16 (38)

Marston, Emily G.  
egmarston@gmail.com  
2-16 (36)

Martin, Margary  
mdm323@gmail.com  
2-09

Martz, Meghan  
mmartz@umich.edu  
1-04

McBain, Ryan  
RMCBAIN@hsph.  
harvard.edu  
2-02

McDaniel, Marla  
MMcDaniel@urban.org  
1-08

McDonald, Erin L.  
EMcDonald@urban.org  
1-08

McGinley, Jim  
jmcgin@unc.edu  
1-04

McHale, Susan M.  
x2u@psu.edu  
1-12, 1-16 (5), 1-16 (31),  
3-04

McMahan, Ethan  
mcmahane@wou.edu  
1-16 (1)

McMullan, Molly  
mollymcmullan@bc.edu  
1-16 (3)

McNeely, Clea  
cmcneely@utk.edu  
1-13

McPhie, Meghan  
mmcphie@yorku.ca  
1-16 (42), (58)

McReynolds, Samuel  
smcreynolds@une.edu  
1-16 (53)

McSwiggan, Meagan  
meagan.mcswiggan@  
gmail.com  
2-16 (21)

Medley, Barbara  
Barbara-Medley@utc.edu  
2-10

Melo Neto, Othon  
othoncxp@gmail.com  
1-16 (57), 2-16 (42)

Mendoza, Celeste M.  
cmendoz@umich.edu  
2-16 (6)

Meyer, Michaela D.  
mmeyer@cnu.edu  
3-03

Miech, Richard  
richard.miech@  
ucdenver.edu  
2-15

Miga, Erin  
erinmiga@gmail.com  
1-07

Mistry, Jayanthi  
jayanthi.mistry@tufts.edu  
1-16 (55), 2-16 (12)

Mitchell, Wendy  
wmorriso@ualberta.ca  
1-16 (35)

Molenaar, Peter C.  
pxm21@psu.edu  
2-16 (60)

Molina, Brooke  
molinab@upmc.edu  
2-16 (41)

Morley, Brittany  
bmorley@une.edu  
1-16 (53)

Mortimer, Jeylan T.  
morti002@umn.edu  
1-05, 1-15, 3-06

Murray, Laura C.  
lamurray@gse.upenn.edu  
1-03

Musante, Danila S.  
dmusante@psych.  
umass.edu  
2-16 (7)

Nakkula, Michael  
mnakkula@gse.upenn.edu  
1-03

Napolitano, Laura J.  
Inapolitano@  
chapinhall.org  
3-05

Nayar, Harjot  
hnayar@fordham.edu  
2-16 (57)

Negy, Charles  
charles.negy@ucf.edu  
2-16 (24)

Nelson, Larry J.  
larry\_nelson@byu.edu  
1-12, 2-16 (23)

<b>Newman, Barbara</b> bnewman@mail.uri 1-03	gmail.com 1-16 (44)	<b>Pedersen, Sarah</b> pedersensl@upmc.edu 2-16 (41)	<b>Preddy, Teri</b> tpreddy@utk.edu 2-16 (26)
<b>Newnham, Elizabeth A.</b> enewnham@hsph. harvard.edu 2-02	<b>Ohannessian, Christine M.</b> ohanness@udel.edu 2-16 (39)	<b>Perez-Brena, Norma J.</b> nperezbr@asu.edu 1-16 (5), 3-04	<b>Prelow, Hazel M.</b> h.prelow@albany.edu 2-16 (34)
<b>Nguyen, Di</b> di.nguyen@jjay.cuny.edu 1-16 (7), 1-16 (56)	<b>Olivares, Isaura</b> iolivares@albany.edu 2-16 (34)	<b>Perez-Felkner, Lara</b> larap@uchicago.edu 1-10	<b>Procidano, Mary E.</b> procidano@fordham.edu 2-16 (57)
<b>Nguyen, Hien</b> hnguyen5@yorku.ca 1-16 (58), 2-16 (45)	<b>Ono, Kim E.</b> kim.e.ono@gmail.com 1-16 (39)	<b>Pergamit, Michael</b> MPergamit@urban.org 1-08	<b>Pryce, Julia</b> jpryce@luc.edu 3-05
<b>Nigg, Joel T.</b> niggj@ohsu.edu 2-02	<b>Orovecz, Joseph</b> jorovecz@gmail.com 2-16 (17)	<b>Perron, Michel</b> michel.perron@uqac.ca 1-16 (15)	<b>Puff, Jayme</b> jpuff24@gmail.com 2-16 (21)
<b>Nigro, Michael</b> mjnigro@ilstu.edu 2-16 (19)	<b>Ostinelli, Paola</b> paolaostinelli@ hotmail.com 2-16 (45)	<b>Peterson, Missy</b> Missyp@ori.org 2-16 (50)	<b>Pungello, Elizabeth</b> liz_pungello@unc.edu 1-08
<b>Nikolas, Molly A.</b> molly-nikolas@uiowa.edu 2-02	<b>Oudekerk, Barbara A.</b> bao2b@virginia.edu 1-07	<b>Peterson, Sabrina M.</b> sabrpete@gmail.com 1-16 (29)	<b>Purtell, Kelly</b> kpurtell@prc.utexas.edu 2-05
<b>Nitkova, Martina</b> mnitkova1@student. gsu.edu 1-16 (1)	<b>Owens, Elizabeth B.</b> lizowens@berkeley.edu 2-16 (37)	<b>Pettit, Gregory</b> gpettit@auburn.edu 2-07, 2-16 (31)	<b>Putallaz, Martha</b> putallaz@duke.edu 1-16 (20)
<b>Noack, Peter</b> peter.noack@uni-jena.de 1-16 (4)	<b>Page, Lindsay</b> pageli@gse.harvard.edu 1-09	<b>Phillips, Rebekah</b> rphillips16@sycamores. indstate.edu 2-16 (54)	<b>Pyle, Raven</b> ravenpyle@gmail.com 2-12
<b>Nocenti, David</b> dnocenti@ unionsettlement.org 1-10	<b>Papp, Cameron</b> cameronpapp13@ gmail.com 1-16 (29)	<b>Pittman, Joe F.</b> pittmjf@auburn.edu 2-16 (31)	<b>Raiziene, Saule</b> s.raiziene@mruni.eu 1-16 (27)
<b>Nopoulos, Peggy</b> peggy-nopoulos@ uiowa.edu 2-04	<b>Park, M. J.</b> jane.park@ucsf.edu 3-05	<b>Pittman, Laura</b> lpittman@niu.edu 2-16 (44)	<b>Ramqvist, Johanna</b> johanna.rahmqvist@ gmail.com 1-16 (43)
<b>Norona, Jerika</b> jcnorona@gmail.com 2-16 (26)	<b>Patrick, Megan</b> meganpat@isr.umich.edu 1-04, 1-15, 2-16 (40)	<b>Porfeli, Erik J.</b> eporfeli@neomed.edu 2-16 (3)	<b>Rao, Mrinalini A.</b> marao2@illinois.edu 3-04
<b>Norwood, Sarah Jane</b> norwood@yorku.ca 1-16 (48), 1-16 (58)	<b>Pearte, Catherine</b> catherinepearte@ gmail.com 2-16 (24)	<b>Potter, Daniel</b> dpotter@air.org 2-03	<b>Rawana, Jennine</b> rawana@yorku.ca 1-16 (42), (48), (58), 2-16 (45)
<b>O'Connor, Caitlin G.</b> caitlinoconnor4@	<b>Peck, Stephen C.</b> link@umich.edu 1-16 (12)	<b>Powers, Sally I.</b> powers@psych.umass.edu 2-16 (46)	<b>Read, Aimee</b> alr22@psu.edu 1-07

Rebellion, Cesar  
cesar.rebellion@unh.edu  
2-16 (9), 2-16 (10)

Reese-Weber, Marla  
mjreese@ilstu.edu  
2-16 (19)

Reeve, Robert  
r.reeve@unimelb.edu.au  
2-16 (35)

Reid, Joan A.  
jareid2@usf.edu  
2-16 (49)

Reidy, Catherine  
creidy1@nd.edu  
2-16 (5)

Reilly, Timothy S.  
tsreilly@stanford.edu  
1-16 (14)

Renk, Kimberly  
kimberly.renk@ucf.edu  
1-16 (46), 2-16 (21), 2-16  
(24)

Renken, Maggie D.  
mrenken@gsu.edu  
1-16 (1)

Reviere, Rebecca  
rreviere@howard.edu  
2-10

Reynolds, Chandra A.  
Chandra.Reynolds@  
ucr.edu  
1-16 (52)

Rhoades, Kimberly A.  
kimberlyr@oslc.org  
2-14

Rhodes, Jean  
Jean.Rhodes@umb.edu  
2-16 (15), 2-16 (56)

Rhodes, Melissa  
melissa.rhodes@  
nationwidechildrens.org  
2-02

Ritchie, Amanda  
amanda.ritchie@nyu.edu  
2-16 (16)

Rodriguez, Sue Annie  
sue.rodriguez@asu.edu  
1-16 (5)

Rodweller, Casey A.  
carodweller@loyola.edu  
2-16 (23)

Roeser, Robert W.  
rroeser@pdx.edu  
1-16 (12), 3-04

Roksa, Josipa  
jroksa@virginia.edu  
2-03

Romano, Eduardo  
romano@pire.org  
2-16 (59)

Romano, Elisa  
eromano@uottawa.ca  
2-16 (47)

Romero, Diana  
Diana.Romero@hunter.  
cuny.edu  
1-10

Rooney, Christina  
crooney@fordham.edu  
2-16 (57)

Ruschoff, Britta  
B.Ruschoff@rug.nl  
2-03

Russell, Shannon L.  
russells@umd.edu  
2-13

Ryan, Aubrey  
aubreyelizabethryan@  
gmail.com  
2-12

Saint-Eloi Cadely, Hans  
hzs0009@tigermail.  
auburn.edu  
2-16 (31)

Salmela-Aro, Katariina  
katariina.salmela-aro@  
helsinki.fi  
3-06

Samuels, Gina

gmsamuels@uchicago.edu  
3-05

Sandler, Irwin  
irwin.sandler@asu.edu  
1-08

Sarkadi, Anna  
anna.sarkadi@kbh.uu.se  
1-16 (43)

Saulter, Leah J.  
lsau0381@students.  
vsu.edu  
2-16 (13)

Savage, Joanne  
jsavage@american.edu  
2-12

Sayer, Aline  
sayer@psych.umass.edu  
2-16 (33)

Schmid, Amy  
amyschmid@gmail.com  
2-16 (16)

Schneider, Barbara  
bschneid@msu.edu  
1-09

Schneider, Kimberly T.  
ktschne@ilstu.edu  
1-16 (6)

Schooley, Korynn  
SchooleyK@fulton.  
k12.ga.us  
1-09

Schoon, Ingrid  
I.Schoon@ioe.ac.uk  
1-04, 1-05, 2-15, 3-02

Schulenberg, John  
schulenb@umich.edu  
1-04, 1-15, 2-15

Schwartz, Sarah E.  
sarah.schwartz@  
gmail.com  
2-16 (56)

Schwartz, Seth J.  
SSchwartz@med.  
miami.edu  
2-07

Seiffge-Krenke, Inge  
seiffge-krenke@  
uni-mainz.de  
2-07

Shanahan, Michael J.  
mjshan@email.unc.edu  
1-02, 1-13

Shane, Jacob  
jshane@uci.edu  
1-05

Sharp, Erin H.  
erin.sharp@unh.edu  
2-16 (9), (10)

Shattuck, Paul  
pshattuck@wustl.edu  
1-16 (8)

Sher, Kenneth J.  
SherK@missouri.edu  
2-04

Shikaki, Khalil  
kshikaki@pcpsr.org  
1-13

Shiple, Ahlshia  
ahlshiashipley@gmail.com  
2-10

Shirtcliff, Elizabeth A.  
eshirtcl@uno.edu  
1-02

Shishido, Yuri  
yshishido1@student.  
gsu.edu  
2-04

Simon, Valerie A.  
vsimon@wayne.edu  
2-16 (22)

Singh, Sukhmani  
sukhmani@nyu.edu  
2-09

Sironic, Amanda  
amandasironic@gmail.com  
2-16 (35)

Skidmore, Chloe  
Chloe.Skidmore@  
psych.utah.edu  
1-16 (44)



Skinner, Martie  
skinnm@uw.edu  
1-02

Smith, Casey E.  
casey.umich@gmail.com  
3-03

Smith, Naila  
nsmith20@fordam.edu  
2-09

Solmeyer, Anna  
asolmeyer@psu.edu  
1-12

Spellings, Carolyn R.  
cspellings@gmail.com  
1-13

Spencer, Renee  
rspenc@bu.edu  
2-16 (56)

Sperry, Linda  
Linda.Sperry@indstate.edu  
u  
2-16 (54)

Staff, Jeremy  
jus25@psu.edu  
1-04, 1-05, 1-15, 2-15

Stagner, Matt  
mstagner@chapinhall.org  
1-08

Stevens, Erin N.  
estevens@niu.edu  
2-16 (44)

Stockwell, Timothy  
timstock@uvic.ca  
3-03

Suárez-Orozco, Carola  
csonyu@gmail.com  
2-09

Suárez-Orozco, Marcelo  
msorozco@gmail.com  
2-09

Surra, Catherine  
cas87@psu.edu  
1-12

Suttenfield, Kelsey  
sutenfi@email.meredith.edu  
2-16 (27)

Swann, Jr., William B.  
billswann@gmail.com  
1-16 (25)

Swinton, Akilah  
akilah.swinton@acf.hhs.gov  
1-08

Taub, Jennifer  
jennifer.taub@bcnc.net  
2-16 (12)

Tein, Jenn-Yun  
atjyt@asu.edu  
1-08

Tevington, Patricia  
ptev@sas.upenn.edu  
2-03

Thompson, Kara D.  
murrayk@uvic.ca  
2-16 (11), 3-03

Thompson, R. Bruce  
bthompso@usm.maine.edu  
1-16 (53)

Thurston, Emily C.  
ethursto@asu.edu  
1-02

Tian, Tian  
tiantian-129129@163.com  
1-16 (16)

Tillinger, Miriam  
tillinge@bc.edu  
1-16 (3)

Timmermans, Maartje  
maartje.timmermans@gmail.com  
2-12

Tolvanen, Asko  
asko.tolvanen@jyu.fi  
3-06

Trautwein, Ulrich  
ulrich.trautwein@

uni-tuebingen.de  
2-04

Tsai, Jui-Yun  
ruey\_yun0718@yahoo.com.tw  
1-16 (51)

Tsakayama, Eli  
elit@psych.upenn.edu  
2-04

Tucker, Corinna  
cjtucker@cisunix.unh.edu  
2-16 (9), 2-16 (10)

Turrisi, Rob  
rjt13@psu.edu  
1-07, 1-16 (22)

Tynkkynen, Lotta  
lotta.tynkkynen@jyu.fi  
3-06

Umaña-Taylor, Adriana  
Adriana.Umana-Taylor@asu.edu  
1-16 (5), 2-16 (14), 3-04

Updegraff, Kimberly  
kimberly.updegraff@asu.edu  
1-16 (5), 2-16 (14), 3-04

Usher, Lauren  
lusher@psy.miami.edu  
1-16 (39)

Vaccaro, Annemarie  
avaccaro@uri.edu  
1-03

Vaidya, Jatin G.  
jatin-vaidya@uiowa.edu  
2-04

Valentino, Kristin  
kristin.valentino@nd.edu  
2-16 (51)

van Dulmen, Manfred H.  
mvandul@kent.edu  
1-07, 1-12, 3-06

Van Gundy, Karen  
karen.vangundy@unh.edu  
2-16 (9), 2-16 (10)

van Lier, Pol A.  
pac.van.lier@vu.nl  
2-12

Van Matre, Ryan  
vanmatrer@sbcglobal.net  
1-16 (34)

Vaquera, Elizabeth  
evaquera@usf.edu  
2-16 (32)

Varvil-Weld, Lindsey  
lvweld@psu.edu  
1-16 (22)

Veenstra, René  
d.r.veenstra@rug.nl  
2-03

Vess, Logan R.  
zlr3@goldmail.etsu.edu  
1-16 (18)

Vignoles, Anna  
A.Vignoles@ioe.ac.uk  
1-05

Viorst Gwadz, Marya  
mg2890@nyu.edu  
2-16 (16)

Voas, Robert  
voas@pire.org  
2-16 (59)

Volden, Joanne  
joannevolden@ualberta.ca  
1-16 (35)

Vorasitthanukul, Jesse  
jesse.vee18@gmail.com  
2-16 (48)

Vosylis, Rimantas  
rvosylis@gmail.com  
1-16 (27)

Vuolo, Mike  
mvuolo@purdue.edu  
1-05

Vuotto, Stefanie C.  
svuotto@fordham.edu  
2-16 (57)

Wadsworth, Sally J.

sally.wadsworth@ucr.edu  
1-16 (52)

Waithaka, Eric  
waithaka@uw.edu  
2-16 (8)

Walker, Janet  
Janetw@pdx.edu  
2-16 (52)

Walther, Christine A.  
cap63@pitt.edu  
2-16 (41)

Wang, Yijie  
yijiewang@mail.  
utexas.edu  
2-05

Wei, Zhiyao  
zhw28@pitt.edu  
2-16 (1)

Weitbrecht, Eliza  
weitbrem@mail.uc.edu  
1-16 (30)

Weller, Joshua A.  
jweller@  
decisionresearch.org  
2-14

Wells, Michael  
michael.wells@kbh.uu.se  
1-16 (43)

Welsh, Deborah  
dwelsh@utk.edu  
2-16 (26)

Wentzel, Kathryn R.  
wentzel@umd.edu  
2-13

Wesche, Rose  
rwesche22@gmail.com  
1-16 (28)

Wheeler, Lorey A.  
lorey@asu.edu  
2-16 (14), 3-04

White, Rachel  
rachel.wolfe.white@  
gmail.com  
1-16 (46)

Whitton, Sarah  
sarah.whitton@uc.edu  
1-16 (30)

Wickrama, Kandauda As  
wickrama@uga.edu  
1-13

Widmer, Kera  
klwidme@ilstu.edu  
2-16 (19)

Winer, Jeffrey P.  
jpwiner@psych.umass.edu  
2-16 (46)

Winslow, Emily  
Emily.Winslow@asu.edu  
1-08

Wolchik, Sharlene  
wolchik@asu.edu  
1-08

Wood, Dana  
dwood@gseis.ucla.edu  
2-05

Woodman, Ashley

ashleywo@bc.edu  
1-16 (3)

Woolverton, Maria  
maria.woolverton@  
acf.hhs.gov  
1-08

Wright, Charlotte A.  
charlotteannewright@  
gmail.com  
1-16 (55)

Yao, Julie  
jyao@pire.org  
2-16 (59)

Yaptangco, Mona  
mona.dryjski@psych.utah.  
edu  
1-16 (44)

Yates, Tuppett  
tuppett.yates@ucr.edu  
1-16 (29), 1-16 (50), 3-05

Yi, Jaehee  
jaehee.yi@utah.edu  
1-16 (16)

Yoon, Yesel  
yesel@psych.umass.edu  
1-16 (32)

Young, Rebekah  
rly116@psu.edu  
1-15

Zaff, Jonathan  
jonz@  
americaspromise.org  
2-08

Zaremba-Morgan, Ali

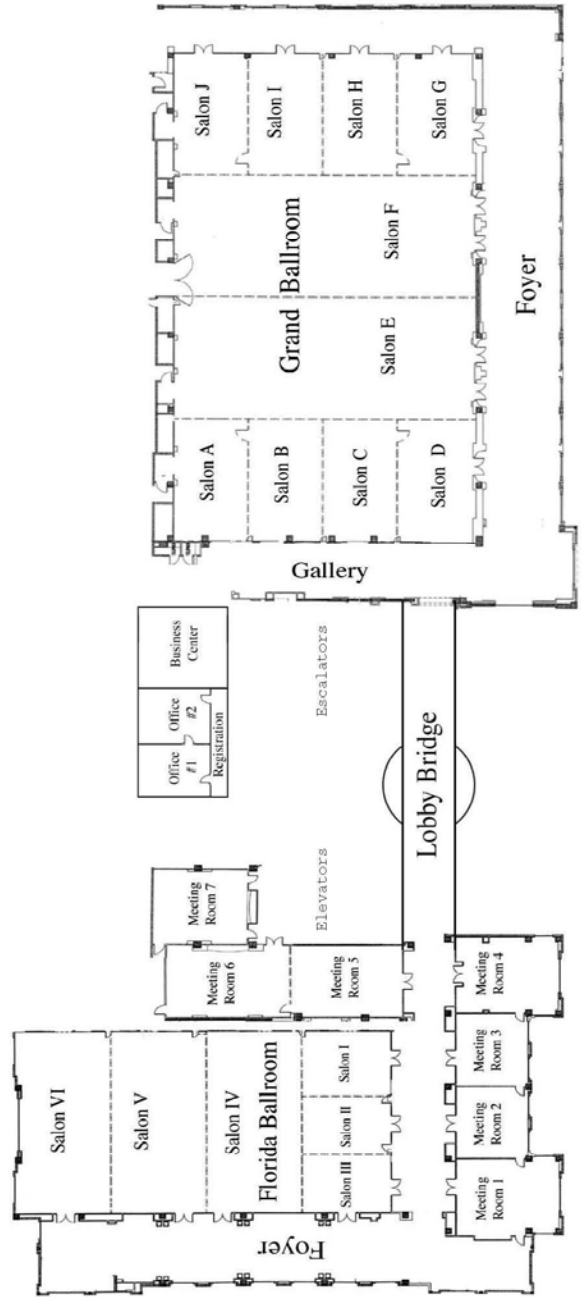
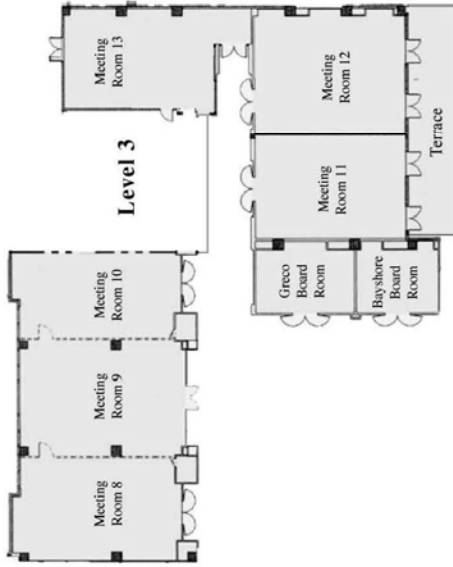
zaremla@gmail.com  
2-12

Zheng, Yao  
yzz122@psu.edu  
2-16 (60)

Zinn, Andrew  
azinn@chapinhall.org  
1-08

Zucker, Robert  
zuckerra@med.umich.edu  
1-04

Zukauskiene, Rita  
rzukausk@mruni.eu  
1-16 (27)



# SRCD 2013 Biennial Meeting

April 18-20, 2013  
Seattle, Washington, USA



Visit the SRCD website for information: [www.srcd.org](http://www.srcd.org)

